

UHMK1 antibody [2H4]

Cat. No. GTX83438

| | |
|---------------------|------------------------|
| Host | Mouse |
| Clonality | Monoclonal |
| Isotype | IgG2b |
| Applications | WB, ICC/IF, IHC-P, FCM |
| Reactivity | Human, Dog |

References (1)
 Package
 100 µl

Applications

Application Note

*Optimal dilutions/concentrations should be determined by the researcher.

| Suggested dilution | Recommended dilution |
|--------------------|----------------------|
| WB | 1:2000 |
| ICC/IF | 1:100 |
| IHC-P | 1:150 |
| FCM | 1:100 |

Not tested in other applications.

Calculated MW 47 kDa. ([Note](#))

Properties

| | |
|----------------------|--|
| Form | Liquid |
| Buffer | PBS, 1% BSA, 50% Glycerol |
| Preservative | 0.02% Sodium azide |
| Storage | Store as concentrated solution. Centrifuge briefly prior to opening vial. For short-term storage (1-2 weeks), store at 4°C. For long-term storage, aliquot and store at -20°C or below. Avoid multiple freeze-thaw cycles. |
| Concentration | 0.82 mg/ml (Please refer to the vial label for the specific concentration.) |
| Immunogen | Full length human recombinant protein of human UHMK1 (NP_787062) produced in HEK293T cell. |
| Purification | Purified by affinity chromatography |
| Conjugation | Unconjugated |

Note

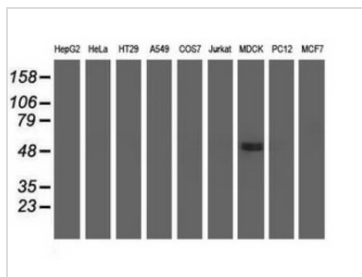
For laboratory research use only. Not for any clinical, therapeutic, or diagnostic use in humans or animals. Not for animal or human consumption.

Purchasers shall not, and agree not to enable third parties to, analyze, copy, reverse engineer or otherwise attempt to determine the structure or sequence of the product.



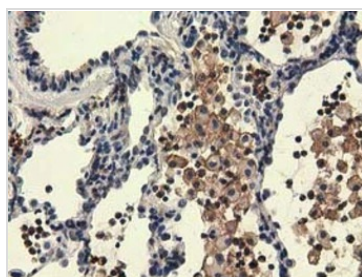
For full product information, images and publications, please visit our [website](#).

DATA IMAGES



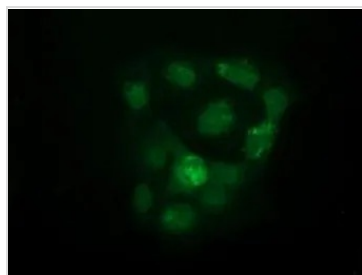
GTX83438 WB Image

WB analysis of various cell lines using GTX83438 UHMK1 antibody [2H4].
Loading : 35 ug per lane



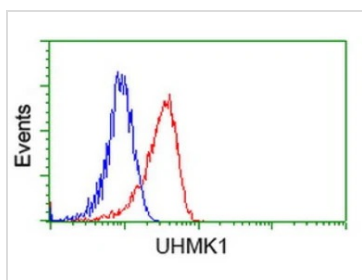
GTX83438 IHC-P Image

IHC-P analysis of human lung carcinoma tissue using GTX83438 UHMK1 antibody [2H4].
Antigen retrieval : Heat-induced epitope retrieval by 10mM citrate buffer, pH6.0, 100°C for 10min.



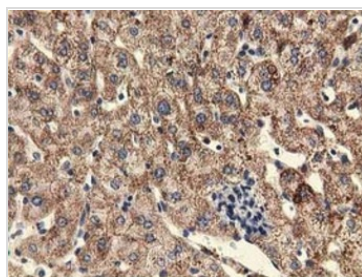
GTX83438 ICC/IF Image

ICC/IF analysis of COS7 cells transiently transfected with UHMK1 plasmid using GTX83438 UHMK1 antibody [2H4].



GTX83438 FCM Image

FACS analysis of HeLa cells using GTX83438 UHMK1 antibody [2H4].
Red : Primary antibody
Blue : Negative control antibody



GTX83438 IHC-P Image

IHC-P analysis of human liver tissue using GTX83438 UHMK1 antibody [2H4].
Antigen retrieval : Heat-induced epitope retrieval by 10mM citrate buffer, pH6.0, 100°C for 10min.



For full product information, images and publications, please visit our [website](#).