

TYRO3 antibody [2C4]

Cat. No. GTX83458

Host	Mouse
Clonality	Monoclonal
Isotype	IgG2b
Applications	WB, ICC/IF, IHC-P, IP
Reactivity	Human

Package
100 µl

Applications

Application Note

*Optimal dilutions/concentrations should be determined by the researcher.

Suggested dilution	Recommended dilution
WB	Assay dependent
ICC/IF	1:100
IHC-P	1:150
IP	2ug/500ul

Not tested in other applications.

Calculated MW 97 kDa. ([Note](#))

Properties

Form	Liquid
Buffer	PBS, 1% BSA, 50% Glycerol
Preservative	0.02% Sodium azide
Storage	Store as concentrated solution. Centrifuge briefly prior to opening vial. For short-term storage (1-2 weeks), store at 4°C. For long-term storage, aliquot and store at -20°C or below. Avoid multiple freeze-thaw cycles.
Concentration	1.3 mg/ml (Please refer to the vial label for the specific concentration.)
Immunogen	Full length human recombinant protein of human TYRO3 (NP_006284) produced in HEK293T cell.
Purification	Purified by affinity chromatography
Conjugation	Unconjugated

Note

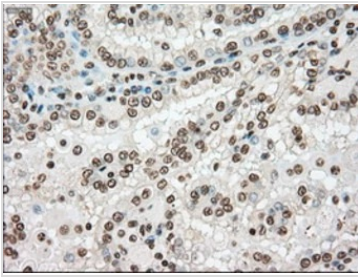
For laboratory research use only. Not for any clinical, therapeutic, or diagnostic use in humans or animals. Not for animal or human consumption.

Purchasers shall not, and agree not to enable third parties to, analyze, copy, reverse engineer or otherwise attempt to determine the structure or sequence of the product.



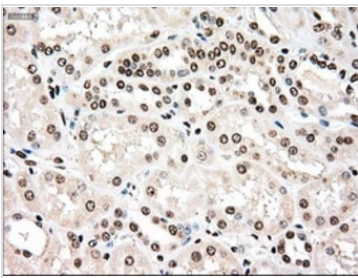
For full product information, images and publications, please visit our [website](#).

DATA IMAGES



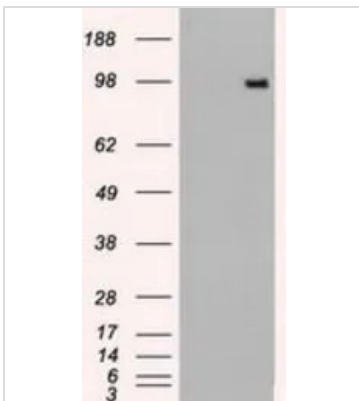
GTX83458 IHC-P Image

IHC-P analysis of human kidney carcinoma tissue using GTX83458 TYRO3 antibody [2C4].
Antigen retrieval : Heat-induced epitope retrieval by 10mM citrate buffer, pH6.0, 100°C for 10min.



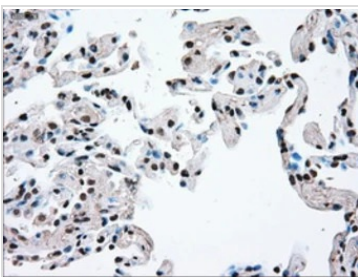
GTX83458 IHC-P Image

IHC-P analysis of human kidney tissue using GTX83458 TYRO3 antibody [2C4].
Antigen retrieval : Heat-induced epitope retrieval by 10mM citrate buffer, pH6.0, 100°C for 10min.



GTX83458 WB Image

WB analysis of HEK293T cells transfected with TYRO3 plasmid (Right) or empty vector (Left) for 48 hrs using GTX83458 TYRO3 antibody [2C4].
Loading : 5 ug per lane



GTX83458 IHC-P Image

IHC-P analysis of human lung tissue using GTX83458 TYRO3 antibody [2C4].
Antigen retrieval : Heat-induced epitope retrieval by 10mM citrate buffer, pH6.0, 100°C for 10min.



For full product information, images and publications, please visit our [website](https://www.genetex.com).