

alpha Tubulin 8 antibody [2C2]

Cat. No. GTX83461

Host	Mouse
Clonality	Monoclonal
Isotype	IgG2a
Applications	WB, ICC/IF, FCM
Reactivity	Human, Monkey

Package
100 µl

Applications

Application Note

*Optimal dilutions/concentrations should be determined by the researcher.

Suggested dilution	Recommended dilution
WB	1:500
ICC/IF	1:100
FCM	1:100

Not tested in other applications.

Calculated MW 50 kDa. ([Note](#))

Properties

Form	Liquid
Buffer	PBS, 1% BSA, 50% Glycerol
Preservative	0.02% Sodium azide
Storage	Store as concentrated solution. Centrifuge briefly prior to opening vial. For short-term storage (1-2 weeks), store at 4°C. For long-term storage, aliquot and store at -20°C or below. Avoid multiple freeze-thaw cycles.
Concentration	0.81 mg/ml (Please refer to the vial label for the specific concentration.)
Immunogen	Full length human recombinant protein of human TUBA8 (NP_061816) produced in HEK293T cell.
Purification	Purified by affinity chromatography
Conjugation	Unconjugated

Note

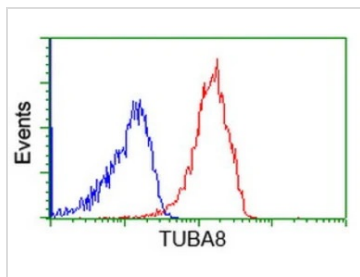
For laboratory research use only. Not for any clinical, therapeutic, or diagnostic use in humans or animals. Not for animal or human consumption.

Purchasers shall not, and agree not to enable third parties to, analyze, copy, reverse engineer or otherwise attempt to determine the structure or sequence of the product.



For full product information, images and publications, please visit our [website](#).

DATA IMAGES

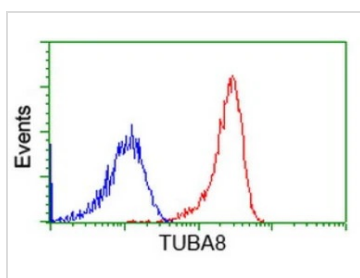


GTX83461 FCM Image

FACS analysis of Jurkat cells using GTX83461 alpha Tubulin 8 antibody [2C2].

Red : Primary antibody

Blue : Negative control antibody

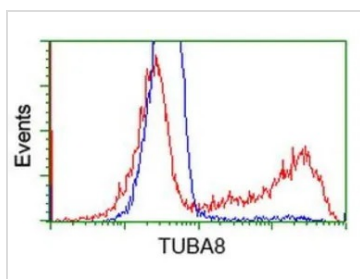


GTX83461 FCM Image

FACS analysis of HeLa cells using GTX83461 alpha Tubulin 8 antibody [2C2].

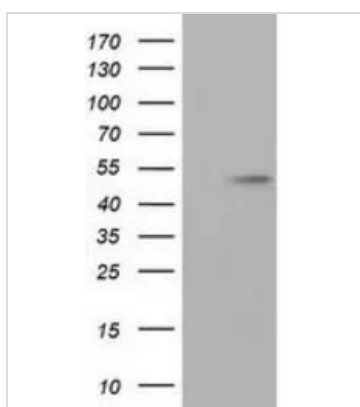
Red : Primary antibody

Blue : Negative control antibody



GTX83461 FCM Image

FACS analysis of HEK293T cells transfected with either alpha Tubulin 8 plasmid (Red) or empty vector control plasmid (Blue) using GTX83461 alpha Tubulin 8 antibody [2C2].



GTX83461 WB Image

WB analysis of HEK293T cells transfected with alpha Tubulin 8 plasmid (Right) or empty vector (Left) for 48 hrs using GTX83461 alpha Tubulin 8 antibody [2C2].

Loading : 5 ug per lane



For full product information, images and publications, please visit our [website](https://www.genetex.com).