

TTLL12 antibody [7F11]

Cat. No. GTX83469

Host	Mouse
Clonality	Monoclonal
Isotype	IgG1
Applications	WB, ICC/IF, IHC-P, FCM
Reactivity	Human, Rat, Dog, Monkey

Package
100 µl

Applications

Application Note

*Optimal dilutions/concentrations should be determined by the researcher.

Suggested dilution	Recommended dilution
WB	1:1000-1:2000
ICC/IF	1:100
IHC-P	1:50
FCM	1:100

Not tested in other applications.

Calculated MW 74 kDa. ([Note](#))

Properties

Form	Liquid
Buffer	PBS, 1% BSA, 50% Glycerol
Preservative	0.02% Sodium azide
Storage	Store as concentrated solution. Centrifuge briefly prior to opening vial. For short-term storage (1-2 weeks), store at 4°C. For long-term storage, aliquot and store at -20°C or below. Avoid multiple freeze-thaw cycles.
Concentration	0.59 mg/ml (Please refer to the vial label for the specific concentration.)
Immunogen	Full length human recombinant protein of human TTLL12 (NP_055955) produced in HEK293T cell.
Purification	Purified by affinity chromatography
Conjugation	Unconjugated

Note

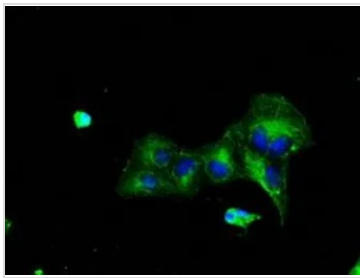
For laboratory research use only. Not for any clinical, therapeutic, or diagnostic use in humans or animals. Not for animal or human consumption.

Purchasers shall not, and agree not to enable third parties to, analyze, copy, reverse engineer or otherwise attempt to determine the structure or sequence of the product.

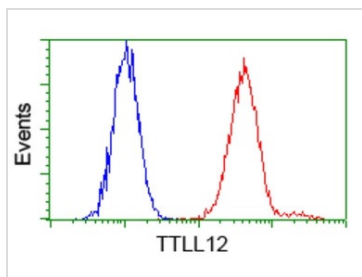


For full product information, images and publications, please visit our [website](#).

DATA IMAGES

**GTX83469 ICC/IF Image**

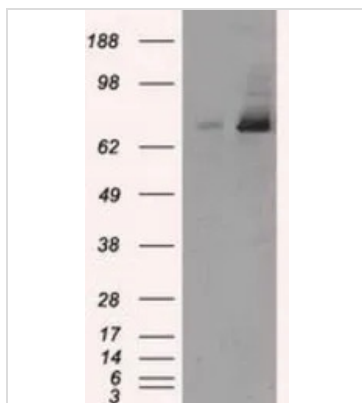
ICC/IF analysis of COS7 cells transiently transfected with TTL12 plasmid using GTX83469 TTL12 antibody [7F11].

**GTX83469 FCM Image**

FACS analysis of HeLa cells using GTX83469 TTL12 antibody [7F11].

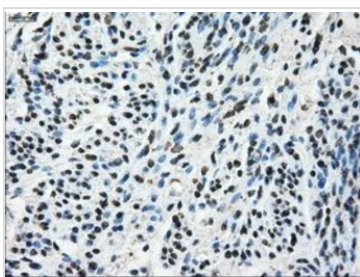
Red : Primary antibody

Blue : Negative control antibody

**GTX83469 WB Image**

WB analysis of HEK293T cells transfected with TTL12 plasmid (Right) or empty vector (Left) for 48 hrs using GTX83469 TTL12 antibody [7F11].

Loading : 5 ug per lane

**GTX83469 IHC-P Image**

IHC-P analysis of endometrium tissue using GTX83469 TTL12 antibody [7F11].

Antigen retrieval : Heat-induced epitope retrieval by 10mM citrate buffer, pH6.0, 100°C for 10min.

Dilution : 1:50



For full product information, images and publications, please visit our [website](#).