

# TRPM4 antibody [10H5]

**Cat. No. GTX83489**

<b>Host</b>	Mouse
<b>Clonality</b>	Monoclonal
<b>Isotype</b>	IgG1
<b>Applications</b>	WB, IHC-P
<b>Reactivity</b>	Human, Dog, Monkey

**Package**  
100 µl

## Applications

### Application Note

\*Optimal dilutions/concentrations should be determined by the researcher.

Suggested dilution	Recommended dilution
WB	1:500-1:2000
IHC-P	1:50

Not tested in other applications.

**Calculated MW** 134 kDa. ([Note](#))

## Properties

<b>Form</b>	Liquid
<b>Buffer</b>	PBS, 1% BSA, 50% Glycerol
<b>Preservative</b>	0.02% Sodium azide
<b>Storage</b>	Store as concentrated solution. Centrifuge briefly prior to opening vial. For short-term storage (1-2 weeks), store at 4°C. For long-term storage, aliquot and store at -20°C or below. Avoid multiple freeze-thaw cycles.
<b>Concentration</b>	1 mg/ml (Please refer to the vial label for the specific concentration.)
<b>Immunogen</b>	Full length human recombinant protein of human TRPM4 (NP_060106) produced in HEK293T cell.
<b>Purification</b>	Purified by affinity chromatography From tissue culture supernatant
<b>Conjugation</b>	Unconjugated

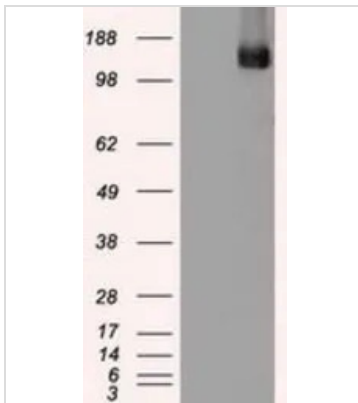
### Note

For laboratory research use only. Not for any clinical, therapeutic, or diagnostic use in humans or animals. Not for animal or human consumption.

Purchasers shall not, and agree not to enable third parties to, analyze, copy, reverse engineer or otherwise attempt to determine the structure or sequence of the product.

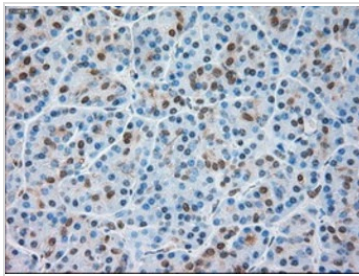


For full product information, images and publications, please visit our [website](#).

**DATA IMAGES**

**GTx83489 WB Image**

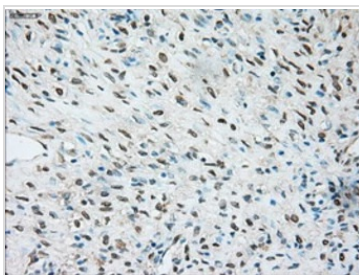
WB analysis of HEK293T cells transfected with TRPM4 plasmid (Right) or empty vector (Left) for 48 hrs using GTx83489 TRPM4 antibody [10H5].

Loading : 5 ug per lane


**GTx83489 IHC-P Image**

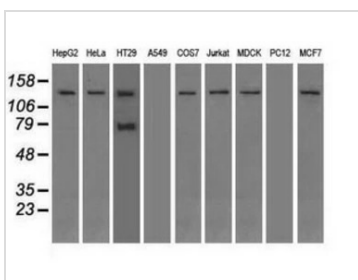
IHC-P analysis of human pancreas tissue using GTx83489 TRPM4 antibody [10H5].

Antigen retrieval : Heat-induced epitope retrieval by 10mM citrate buffer, pH6.0, 100°C for 10min.


**GTx83489 IHC-P Image**

IHC-P analysis of human ovary tissue using GTx83489 TRPM4 antibody [10H5].

Antigen retrieval : Heat-induced epitope retrieval by 10mM citrate buffer, pH6.0, 100°C for 10min.


**GTx83489 WB Image**

WB analysis of various cell lines using GTx83489 TRPM4 antibody [10H5].

Loading : 35 ug per lane



For full product information, images and publications, please visit our [website](https://www.genetex.com).