

TRIB2 antibody [8D11]

Cat. No. GTX83495

Host	Mouse
Clonality	Monoclonal
Isotype	IgG2b
Applications	WB, ICC/IF, IHC-P, FCM
Reactivity	Human, Monkey

Package
100 µl

Applications

Application Note

*Optimal dilutions/concentrations should be determined by the researcher.

Suggested dilution	Recommended dilution
WB	1:2000
ICC/IF	1:50
IHC-P	1:50
FCM	1:100

Not tested in other applications.

Calculated MW 39 kDa. ([Note](#))

Properties

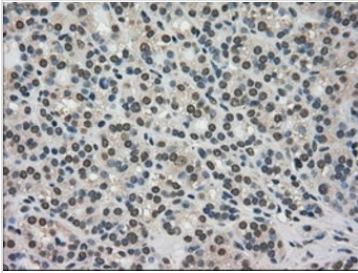
Form	Liquid
Buffer	PBS, 1% BSA, 50% Glycerol
Preservative	0.02% Sodium azide
Storage	Store as concentrated solution. Centrifuge briefly prior to opening vial. For short-term storage (1-2 weeks), store at 4°C. For long-term storage, aliquot and store at -20°C or below. Avoid multiple freeze-thaw cycles.
Concentration	1 mg/ml (Please refer to the vial label for the specific concentration.)
Immunogen	Full length human recombinant protein of human TRIB2 (NP_067675) produced in HEK293T cell.
Purification	Purified by affinity chromatography From tissue culture supernatant
Conjugation	Unconjugated

For full product information, images and publications, please visit our [website](#).

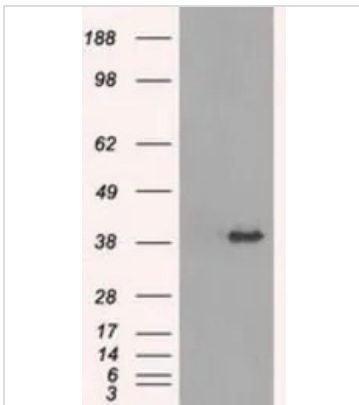
For laboratory research use only. Not for any clinical, therapeutic, or diagnostic use in humans or animals. Not for animal or human consumption.

Note

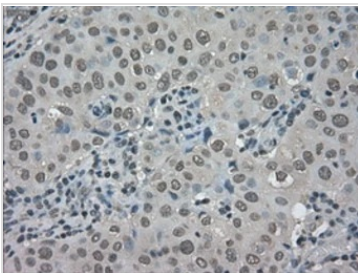
Purchasers shall not, and agree not to enable third parties to, analyze, copy, reverse engineer or otherwise attempt to determine the structure or sequence of the product.

DATA IMAGES

GTX83495 IHC-P Image

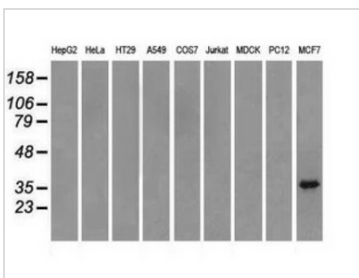
IHC-P analysis of human thyroid carcinoma tissue using GTX83495 TRIB2 antibody [8D11].
Antigen retrieval : Heat-induced epitope retrieval by 10mM citrate buffer, pH6.0, 100°C for 10min.


GTX83495 WB Image

WB analysis of HEK293T cells transfected with TRIB2 plasmid (Right) or empty vector (Left) for 48 hrs using GTX83495 TRIB2 antibody [8D11].
Loading : 5 ug per lane


GTX83495 IHC-P Image

IHC-P analysis of human breast adenocarcinoma tissue using GTX83495 TRIB2 antibody [8D11].
Antigen retrieval : Heat-induced epitope retrieval by 10mM citrate buffer, pH6.0, 100°C for 10min.


GTX83495 WB Image

WB analysis of various cell lines using GTX83495 TRIB2 antibody [8D11].
Loading : 35 ug per lane



For full product information, images and publications, please visit our [website](https://www.genetex.com).