

## TPMT antibody [4C1]

Cat. No. GTX83497

Host	Mouse
Clonality	Monoclonal
Isotype	IgG1
Applications	WB, IHC-P, FCM
Reactivity	Human, Dog

Package  
100 µl

## Applications

## Application Note

\*Optimal dilutions/concentrations should be determined by the researcher.

Suggested dilution	Recommended dilution
WB	1:1000
IHC-P	1:50
FCM	1:100

Not tested in other applications.

Calculated MW 28 kDa. ( [Note](#) )

## Properties

Form	Liquid
Buffer	PBS, 1% BSA, 50% Glycerol
Preservative	0.02% Sodium azide
Storage	Store as concentrated solution. Centrifuge briefly prior to opening vial. For short-term storage (1-2 weeks), store at 4°C. For long-term storage, aliquot and store at -20°C or below. Avoid multiple freeze-thaw cycles.
Concentration	0.88 mg/ml (Please refer to the vial label for the specific concentration.)
Immunogen	Full length human recombinant protein of human TPMT (NP_000358) produced in HEK293T cell.
Purification	Purified by affinity chromatography
Conjugation	Unconjugated

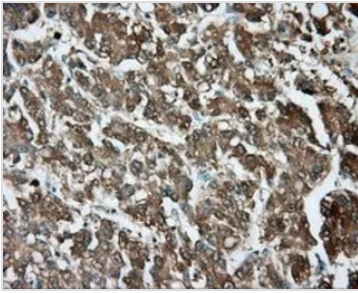
## Note

For laboratory research use only. Not for any clinical, therapeutic, or diagnostic use in humans or animals. Not for animal or human consumption.

Purchasers shall not, and agree not to enable third parties to, analyze, copy, reverse engineer or otherwise attempt to determine the structure or sequence of the product.



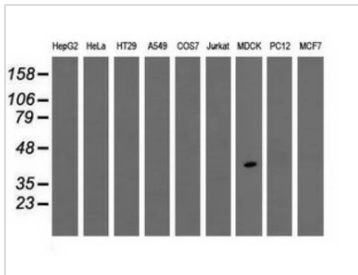
For full product information, images and publications, please visit our [website](#).

**DATA IMAGES**

**GTX83497 IHC-P Image**

IHC-P analysis of liver carcinoma tissue using GTX83497 TPMT antibody [4C1].

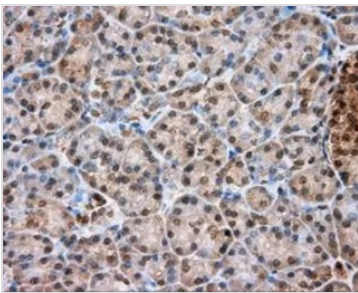
Antigen retrieval : Heat-induced epitope retrieval by 10mM citrate buffer, pH6.0, 100°C for 10min.

Dilution : 1:50


**GTX83497 WB Image**

WB analysis of various cell lines using GTX83497 TPMT antibody [4C1].

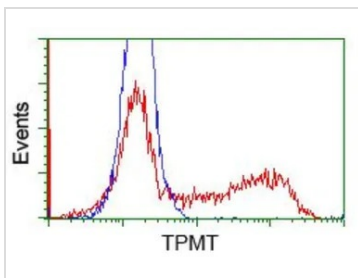
Loading : 35 ug per lane


**GTX83497 IHC-P Image**

IHC-P analysis of pancreas tissue using GTX83497 TPMT antibody [4C1].

Antigen retrieval : Heat-induced epitope retrieval by 10mM citrate buffer, pH6.0, 100°C for 10min.

Dilution : 1:50


**GTX83497 FCM Image**

FACS analysis of HEK293T cells transfected with either TPMT plasmid(Red) or empty vector control plasmid(Blue) using GTX83497 TPMT antibody [4C1].



For full product information, images and publications, please visit our [website](https://www.genetex.com).