

## Cardiac Troponin I antibody [4A3]

Cat. No. GTX83501

|             |            |
|-------------|------------|
| Host        | Mouse      |
| Clonality   | Monoclonal |
| Isotype     | IgG1       |
| Application | WB, IHC-P  |
| Reactivity  | Human      |

Package  
100 µl

## APPLICATION

## Application Note

\*Optimal dilutions/concentrations should be determined by the researcher.

| Suggested dilution | Recommended dilution |
|--------------------|----------------------|
| WB                 | 1:2000               |
| IHC-P              | 1:50                 |

Not tested in other applications.

Calculated MW 24 kDa. ( [Note](#) )

## PROPERTIES

|               |  |
|---------------|--|
| Form          | Liquid   |
| Buffer        | PBS, 1% BSA, 50% Glycerol  |
| Preservative  | 0.02% Sodium azide   |
| Storage       | Store as concentrated solution. Centrifuge briefly prior to opening vial. For short-term storage (1-2 weeks), store at 4°C. For long-term storage, aliquot and store at -20°C or below. Avoid multiple freeze-thaw cycles. |
| Concentration | 1 mg/ml (Please refer to the vial label for the specific concentration.)   |
| Immunogen     | Recombinant protein expressed in E.coli corresponding to amino acids 1-210 of human TNNT3  |
| Purification  | Purified by affinity chromatography<br>From tissue culture supernatant   |
| Conjugation   | Unconjugated   |

**Note**

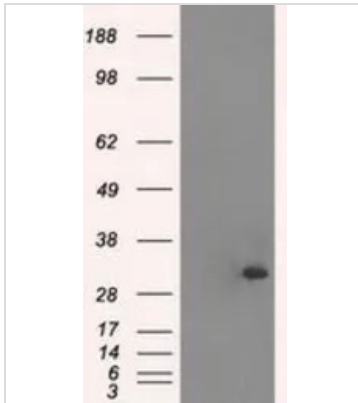
For laboratory research use only. Not for any clinical, therapeutic, or diagnostic use in humans or animals. Not for animal or human consumption.

Purchasers shall not, and agree not to enable third parties to, analyze, copy, reverse engineer or otherwise attempt to determine the structure or sequence of the product.



For full product information, images and publications, please visit our [website](#).

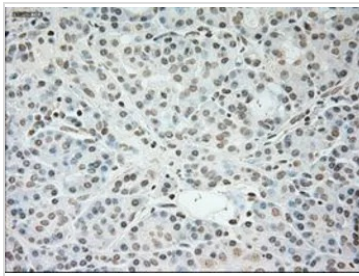
## DATA IMAGES



### GTx83501 WB Image

WB analysis of HEK293T cells transfected with Cardiac Troponin I plasmid (Right) or empty vector (Left) for 48 hrs using GTx83501 Cardiac Troponin I antibody [4A3].

Loading : 5 ug per lane

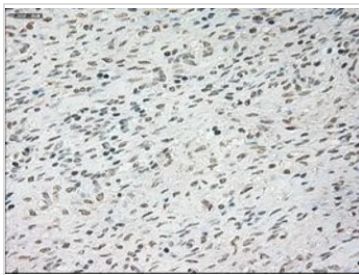


### GTx83501 IHC-P Image

IHC-P analysis of pancreas tissue using GTx83501 Cardiac Troponin I antibody [4A3].

Antigen retrieval : Heat-induced epitope retrieval by 10mM citrate buffer, pH6.0, 100°C for 10min.

Dilution : 1:50



### GTx83501 IHC-P Image

IHC-P analysis of ovary tissue using GTx83501 Cardiac Troponin I antibody [4A3].

Antigen retrieval : Heat-induced epitope retrieval by 10mM citrate buffer, pH6.0, 100°C for 10min.

Dilution : 1:50



For full product information, images and publications, please visit our [website](https://www.genetex.com).