

TMEM100 antibody [1F8]

Cat. No. GTX83507

Host	Mouse
Clonality	Monoclonal
Isotype	IgG2b
Applications	WB, IHC-P
Reactivity	Human, Dog, Monkey

References (1)

Package

100 µl

Applications

Application Note

*Optimal dilutions/concentrations should be determined by the researcher.

Suggested dilution	Recommended dilution
WB	1:500
IHC-P	Assay dependent

Not tested in other applications.

Calculated MW 14 kDa. ([Note](#))

Properties

Form	Liquid
Buffer	PBS, 1% BSA, 50% Glycerol
Preservative	0.02% Sodium azide
Storage	Store as concentrated solution. Centrifuge briefly prior to opening vial. For short-term storage (1-2 weeks), store at 4°C. For long-term storage, aliquot and store at -20°C or below. Avoid multiple freeze-thaw cycles.
Concentration	1 mg/ml (Please refer to the vial label for the specific concentration.)
Immunogen	Full-length protein expressed in 293T cell transfected with human TMEM100 expression vector
Purification	Purified by affinity chromatography
Conjugation	Unconjugated

Note

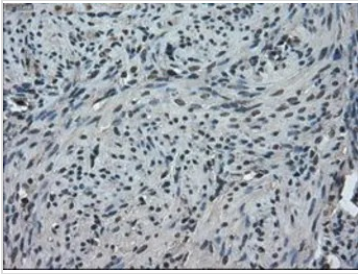
For laboratory research use only. Not for any clinical, therapeutic, or diagnostic use in humans or animals. Not for animal or human consumption.

Purchasers shall not, and agree not to enable third parties to, analyze, copy, reverse engineer or otherwise attempt to determine the structure or sequence of the product.



For full product information, images and publications, please visit our [website](#).

DATA IMAGES

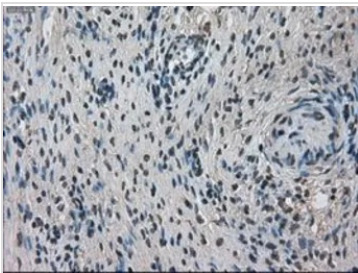


GTX83507 IHC-P Image

IHC-P analysis of endometrium tissue using GTX83507 TMEM100 antibody [1F8].

Antigen retrieval : Heat-induced epitope retrieval by 10mM citrate buffer, pH6.0, 100°C for 10min.

Dilution : 1:50

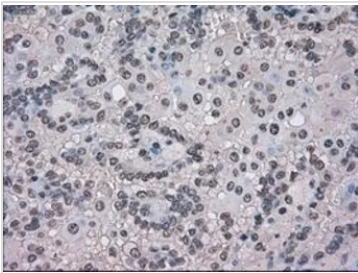


GTX83507 IHC-P Image

IHC-P analysis of ovary tissue using GTX83507 TMEM100 antibody [1F8].

Antigen retrieval : Heat-induced epitope retrieval by 10mM citrate buffer, pH6.0, 100°C for 10min.

Dilution : 1:50

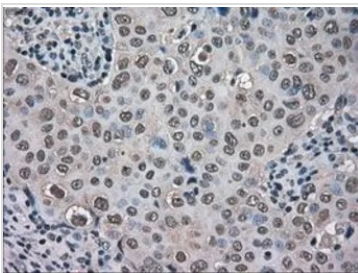


GTX83507 IHC-P Image

IHC-P analysis of kidney carcinoma tissue using GTX83507 TMEM100 antibody [1F8].

Antigen retrieval : Heat-induced epitope retrieval by 10mM citrate buffer, pH6.0, 100°C for 10min.

Dilution : 1:50

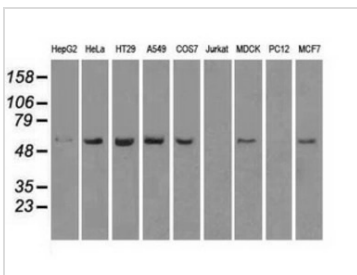


GTX83507 IHC-P Image

IHC-P analysis of breast adenocarcinoma tissue using GTX83507 TMEM100 antibody [1F8].

Antigen retrieval : Heat-induced epitope retrieval by 10mM citrate buffer, pH6.0, 100°C for 10min.

Dilution : 1:50



GTX83507 WB Image

WB analysis of various cell lines using GTX83507 TMEM100 antibody [1F8].

Loading : 35 ug per lane



For full product information, images and publications, please visit our [website](https://www.genetex.com).