

## TXA synthase antibody [2C1]

**Cat. No. GTX83523**

<b>Host</b>	Mouse
<b>Clonality</b>	Monoclonal
<b>Isotype</b>	IgG2a
<b>Applications</b>	WB, ICC/IF, IHC-P, FCM
<b>Reactivity</b>	Human, Rat

**Package**  
100 µl

## Applications

**Application Note**

\*Optimal dilutions/concentrations should be determined by the researcher.

Suggested dilution	Recommended dilution
WB	1:2000
ICC/IF	1:100
IHC-P	1:50
FCM	1:100

Not tested in other applications.

**Calculated MW** 61 kDa. ([Note](#))

## Properties

<b>Form</b>	Liquid
<b>Buffer</b>	PBS, 1% BSA, 50% Glycerol
<b>Preservative</b>	0.02% Sodium azide
<b>Storage</b>	Store as concentrated solution. Centrifuge briefly prior to opening vial. For short-term storage (1-2 weeks), store at 4°C. For long-term storage, aliquot and store at -20°C or below. Avoid multiple freeze-thaw cycles.
<b>Concentration</b>	0.86 mg/ml (Please refer to the vial label for the specific concentration.)
<b>Immunogen</b>	Full length human recombinant protein of human TBXAS1(NP_001052) produced in HEK293T cell.
<b>Purification</b>	Purified by affinity chromatography
<b>Conjugation</b>	Unconjugated

**Note**

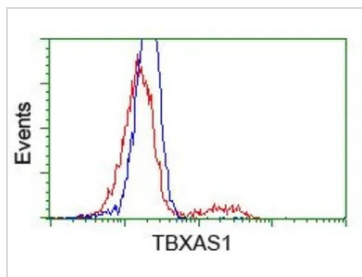
For laboratory research use only. Not for any clinical, therapeutic, or diagnostic use in humans or animals. Not for animal or human consumption.

Purchasers shall not, and agree not to enable third parties to, analyze, copy, reverse engineer or otherwise attempt to determine the structure or sequence of the product.

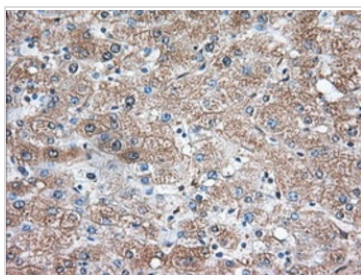


For full product information, images and publications, please visit our [website](#).

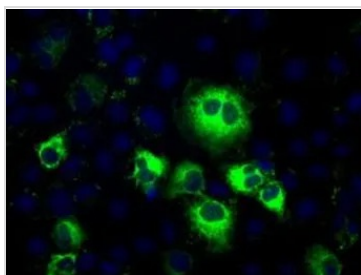
## DATA IMAGES

**GTX83523 FCM Image**

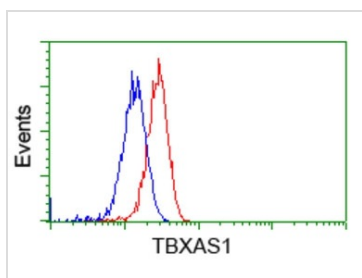
FACS analysis of HEK293T cells transfected with either TXA synthase plasmid(Red) or empty vector control plasmid(Blue) using GTX83523 TXA synthase antibody [2C1].

**GTX83523 IHC-P Image**

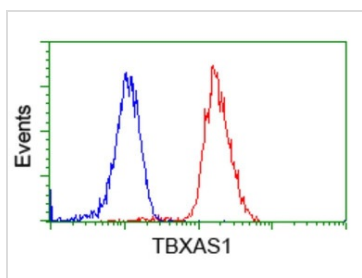
IHC-P analysis of human liver tissue using GTX83523 TXA synthase antibody [2C1].  
Antigen retrieval : Heat-induced epitope retrieval by 10mM citrate buffer, pH6.0, 100°C for 10min.  
Dilution : 1:50

**GTX83523 ICC/IF Image**

ICC/IF analysis of COS7 cells transiently transfected with TXA synthase plasmid using GTX83523 TXA synthase antibody [2C1].

**GTX83523 FCM Image**

FACS analysis of HeLa cells using GTX83523 TXA synthase antibody [2C1].  
Red : Primary antibody  
Blue : Negative control antibody

**GTX83523 FCM Image**

FACS analysis of Jurkat cells using GTX83523 TXA synthase antibody [2C1].  
Red : Primary antibody  
Blue : Negative control antibody



For full product information, images and publications, please visit our [website](#).