

STK39 antibody [4E3]

Cat. No. GTX83542

Host	Mouse
Clonality	Monoclonal
Isotype	IgG2b
Applications	WB, ICC/IF, IHC-P, FCM
Reactivity	Human, Monkey

Package
100 µl

Applications

Application Note

*Optimal dilutions/concentrations should be determined by the researcher.

Suggested dilution	Recommended dilution
WB	1:2000
ICC/IF	1:50
IHC-P	1:50
FCM	1:100

Not tested in other applications.

Calculated MW 59 kDa. ([Note](#))

Properties

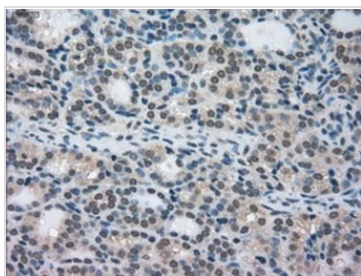
Form	Liquid
Buffer	PBS, 1% BSA, 50% Glycerol
Preservative	0.02% Sodium azide
Storage	Store as concentrated solution. Centrifuge briefly prior to opening vial. For short-term storage (1-2 weeks), store at 4°C. For long-term storage, aliquot and store at -20°C or below. Avoid multiple freeze-thaw cycles.
Concentration	1 mg/ml (Please refer to the vial label for the specific concentration.)
Immunogen	Full length human recombinant protein of human STK39 (NP_037365) produced in HEK293T cell.
Purification	Purified by affinity chromatography From tissue culture supernatant
Conjugation	Unconjugated

For full product information, images and publications, please visit our [website](#).

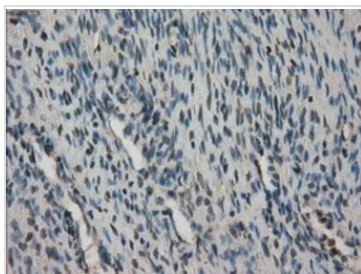
For laboratory research use only. Not for any clinical, therapeutic, or diagnostic use in humans or animals. Not for animal or human consumption.

Note

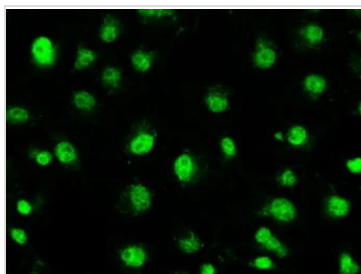
Purchasers shall not, and agree not to enable third parties to, analyze, copy, reverse engineer or otherwise attempt to determine the structure or sequence of the product.

DATA IMAGES

GTX83542 IHC-P Image

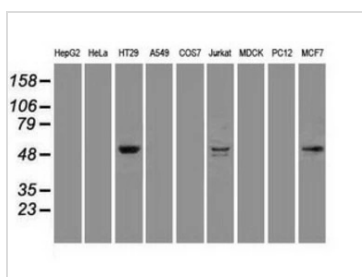
IHC-P analysis of human thyroid carcinoma tissue using GTX83542 STK39 antibody [4E3].
Antigen retrieval : Heat-induced epitope retrieval by 10mM citrate buffer, pH6.0, 100°C for 10min.


GTX83542 IHC-P Image

IHC-P analysis of human ovary tissue using GTX83542 STK39 antibody [4E3].
Antigen retrieval : Heat-induced epitope retrieval by 10mM citrate buffer, pH6.0, 100°C for 10min.


GTX83542 ICC/IF Image

ICC/IF analysis of COS7 cells using GTX83542 STK39 antibody [4E3].


GTX83542 WB Image

WB analysis of various cell lines using GTX83542 STK39 antibody [4E3].
Loading : 35 ug per lane



For full product information, images and publications, please visit our [website](https://www.genetex.com).