

## STAT3 antibody [21E7]

Cat. No. GTX83549

Host	Mouse
Clonality	Monoclonal
Isotype	IgG1
Applications	WB, IHC-P
Reactivity	Human, Mouse, Rat, Dog

References ( 1 )

Package

100 µl

## Applications

## Application Note

\*Optimal dilutions/concentrations should be determined by the researcher.

Suggested dilution	Recommended dilution
WB	1:500
IHC-P	1:50

Not tested in other applications.

Calculated MW 88 kDa. ( [Note](#) )

## Properties

Form	Liquid
Buffer	PBS, 1% BSA, 50% Glycerol
Preservative	0.02% Sodium azide
Storage	Store as concentrated solution. Centrifuge briefly prior to opening vial. For short-term storage (1-2 weeks), store at 4°C. For long-term storage, aliquot and store at -20°C or below. Avoid multiple freeze-thaw cycles.
Concentration	0.35 mg/ml (Please refer to the vial label for the specific concentration.)
Immunogen	Recombinant protein expressed in E.coli corresponding to amino acids 154-175 of human stat3
Purification	Purified by affinity chromatography
Conjugation	Unconjugated

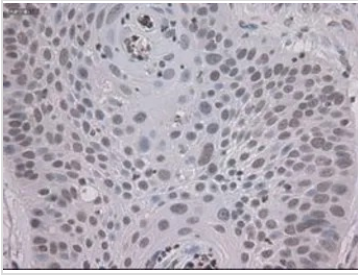
## Note

For laboratory research use only. Not for any clinical, therapeutic, or diagnostic use in humans or animals. Not for animal or human consumption.

Purchasers shall not, and agree not to enable third parties to, analyze, copy, reverse engineer or otherwise attempt to determine the structure or sequence of the product.



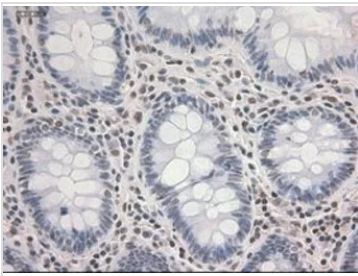
For full product information, images and publications, please visit our [website](#).

**DATA IMAGES**

**GTx83549 IHC-P Image**

IHC-P analysis of lung carcinoma tissue using GTx83549 STAT3 antibody [21E7].

Antigen retrieval : Heat-induced epitope retrieval by 10mM citrate buffer, pH6.0, 100°C for 10min.

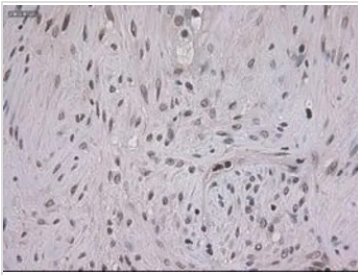
Dilution : 1:150


**GTx83549 IHC-P Image**

IHC-P analysis of colon tissue using GTx83549 STAT3 antibody [21E7].

Antigen retrieval : Heat-induced epitope retrieval by 10mM citrate buffer, pH6.0, 100°C for 10min.

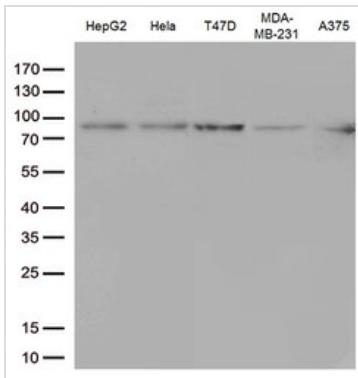
Dilution : 1:150


**GTx83549 IHC-P Image**

IHC-P analysis of pancreas carcinoma tissue using GTx83549 STAT3 antibody [21E7].

Antigen retrieval : Heat-induced epitope retrieval by 10mM citrate buffer, pH6.0, 100°C for 10min.

Dilution : 1:150


**GTx83549 WB Image**

WB analysis of various cell lines using GTx83549 STAT3 antibody [21E7].

Loading : 35 ug per lane

Dilution : 1:500



For full product information, images and publications, please visit our [website](http://www.genetex.com).