

STAT1 antibody [4H9]

Cat. No. GTX83552

Host	Mouse
Clonality	Monoclonal
Isotype	IgG1
Applications	WB, ICC/IF, IHC-P
Reactivity	Human, Dog, Monkey

Package
100 µl

Applications

Application Note

*Optimal dilutions/concentrations should be determined by the researcher.

Suggested dilution	Recommended dilution
WB	1:1000-1:2000
ICC/IF	1:50-1:100
IHC-P	1:50

Not tested in other applications.

Calculated MW 87 kDa. ([Note](#))

Properties

Form	Liquid
Buffer	PBS, 1% BSA, 50% Glycerol
Preservative	0.02% Sodium azide
Storage	Store as concentrated solution. Centrifuge briefly prior to opening vial. For short-term storage (1-2 weeks), store at 4°C. For long-term storage, aliquot and store at -20°C or below. Avoid multiple freeze-thaw cycles.
Concentration	0.7 mg/ml (Please refer to the vial label for the specific concentration.)
Immunogen	Full length human recombinant protein of human STAT1 (NP_009330) produced in HEK293T cell.
Purification	Purified by affinity chromatography
Conjugation	Unconjugated

Note

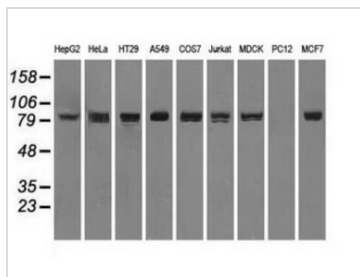
For laboratory research use only. Not for any clinical, therapeutic, or diagnostic use in humans or animals. Not for animal or human consumption.

Purchasers shall not, and agree not to enable third parties to, analyze, copy, reverse engineer or otherwise attempt to determine the structure or sequence of the product.



For full product information, images and publications, please visit our [website](#).

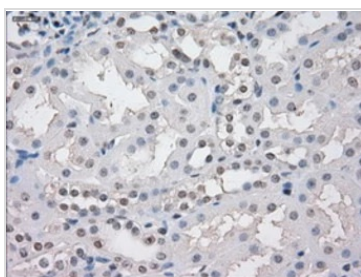
DATA IMAGES



GTX83552 WB Image

WB analysis of various cell lines using GTX83552 STAT1 antibody [4H9].

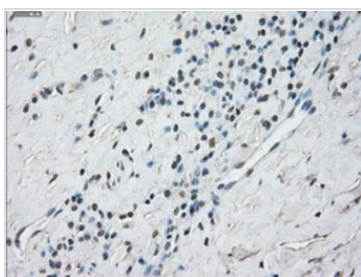
Loading : 35 ug per lane



GTX83552 IHC-P Image

IHC-P analysis of human kidney tissue using GTX83552 STAT1 antibody [4H9].

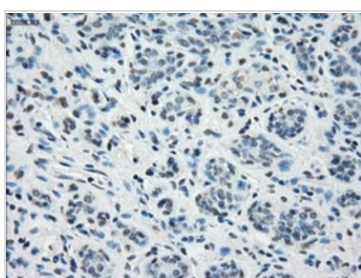
Antigen retrieval : Heat-induced epitope retrieval by 10mM citrate buffer, pH6.0, 100°C for 10min.



GTX83552 IHC-P Image

IHC-P analysis of human thyroid carcinoma tissue using GTX83552 STAT1 antibody [4H9].

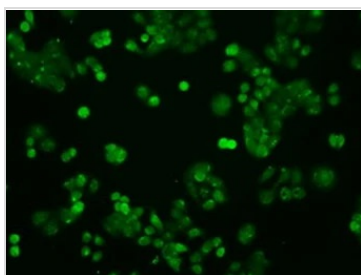
Antigen retrieval : Heat-induced epitope retrieval by 10mM citrate buffer, pH6.0, 100°C for 10min.



GTX83552 IHC-P Image

IHC-P analysis of human breast tissue using GTX83552 STAT1 antibody [4H9].

Antigen retrieval : Heat-induced epitope retrieval by 10mM citrate buffer, pH6.0, 100°C for 10min.



GTX83552 ICC/IF Image

ICC/IF analysis of HT29 cells using GTX83552 STAT1 antibody [4H9].



For full product information, images and publications, please visit our [website](https://www.genetex.com).