

SSX2 antibody [4D10]

Cat. No. GTX83555

Host	Mouse
Clonality	Monoclonal
Isotype	IgG1
Application	WB, ICC/IF, IHC-P
Reactivity	Human, Mouse, Monkey

Package
100 µl

APPLICATION

Application Note

*Optimal dilutions/concentrations should be determined by the researcher.

Suggested dilution	Recommended dilution
WB	Assay dependent
ICC/IF	1:100
IHC-P	1:50

Not tested in other applications.

Calculated MW 22 kDa. ([Note](#))

PROPERTIES

Form	Liquid
Buffer	PBS, 1% BSA, 50% Glycerol
Preservative	0.02% Sodium azide
Storage	Store as concentrated solution. Centrifuge briefly prior to opening vial. For short-term storage (1-2 weeks), store at 4°C. For long-term storage, aliquot and store at -20°C or below. Avoid multiple freeze-thaw cycles.
Concentration	0.67 mg/ml (Please refer to the vial label for the specific concentration.)
Immunogen	Full-length protein expressed in 293T cell transfected with human SSX2 expression vector
Purification	Purified by affinity chromatography
Conjugation	Unconjugated

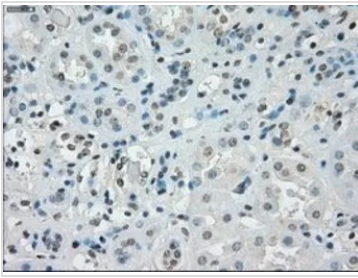
Note

For laboratory research use only. Not for any clinical, therapeutic, or diagnostic use in humans or animals. Not for animal or human consumption.

Purchasers shall not, and agree not to enable third parties to, analyze, copy, reverse engineer or otherwise attempt to determine the structure or sequence of the product.



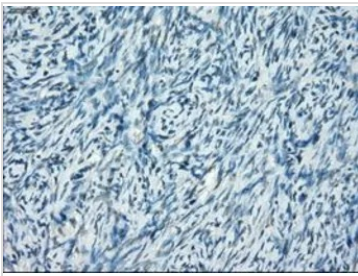
For full product information, images and publications, please visit our [website](#).

DATA IMAGES

GTX83555 IHC-P Image

IHC-P analysis of kidney tissue using GTX83555 SSX2 antibody [4D10].

Antigen retrieval : Heat-induced epitope retrieval by 10mM citrate buffer, pH6.0, 100°C for 10min.

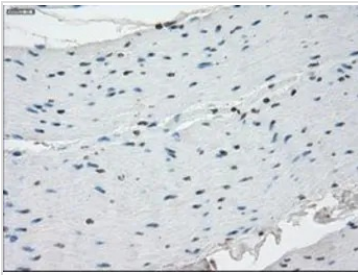
Dilution : 1:50


GTX83555 IHC-P Image

IHC-P analysis of ovary tissue using GTX83555 SSX2 antibody [4D10].

Antigen retrieval : Heat-induced epitope retrieval by 10mM citrate buffer, pH6.0, 100°C for 10min.

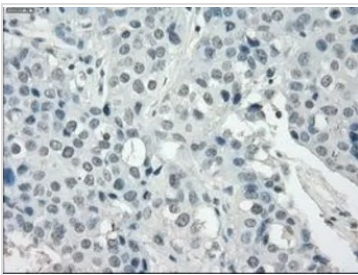
Dilution : 1:50


GTX83555 IHC-P Image

IHC-P analysis of colon tissue using GTX83555 SSX2 antibody [4D10].

Antigen retrieval : Heat-induced epitope retrieval by 10mM citrate buffer, pH6.0, 100°C for 10min.

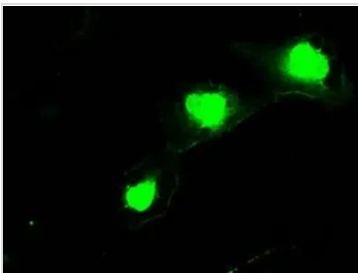
Dilution : 1:50


GTX83555 IHC-P Image

IHC-P analysis of breast adenocarcinoma tissue using GTX83555 SSX2 antibody [4D10].

Antigen retrieval : Heat-induced epitope retrieval by 10mM citrate buffer, pH6.0, 100°C for 10min.

Dilution : 1:50


GTX83555 ICC/IF Image

ICC/IF analysis of COS7 cells transiently transfected with SSX2 plasmid using GTX83555 SSX2 antibody [4D10].



For full product information, images and publications, please visit our [website](#).