

SSSCA1 antibody [2F5]

Cat. No. GTX83556

Host	Mouse
Clonality	Monoclonal
Isotype	IgG1
Applications	WB, ICC/IF, IHC-P, FCM
Reactivity	Human, Mouse, Rat, Dog, Monkey

Package
100 µl

Applications

Application Note

*Optimal dilutions/concentrations should be determined by the researcher.

Suggested dilution	Recommended dilution
WB	1:2000
ICC/IF	1:100
IHC-P	1:150
FCM	1:100

Not tested in other applications.

Calculated MW 21 kDa. ([Note](#))

Properties

Form	Liquid
Buffer	PBS, 1% BSA, 50% Glycerol
Preservative	0.02% Sodium azide
Storage	Store as concentrated solution. Centrifuge briefly prior to opening vial. For short-term storage (1-2 weeks), store at 4°C. For long-term storage, aliquot and store at -20°C or below. Avoid multiple freeze-thaw cycles.
Concentration	0.48 mg/ml (Please refer to the vial label for the specific concentration.)
Immunogen	Full length human recombinant protein of human SSSCA1 (NP_006387) produced in HEK293T cell.
Purification	Purified by affinity chromatography
Conjugation	Unconjugated

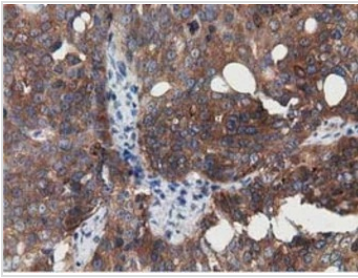
Note

For laboratory research use only. Not for any clinical, therapeutic, or diagnostic use in humans or animals. Not for animal or human consumption.

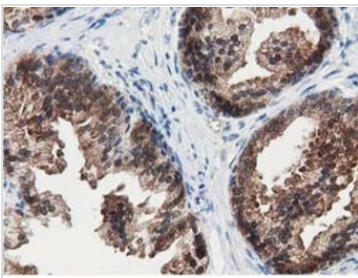
Purchasers shall not, and agree not to enable third parties to, analyze, copy, reverse engineer or otherwise attempt to determine the structure or sequence of the product.



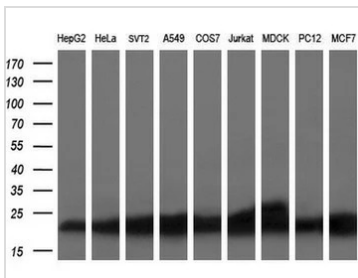
For full product information, images and publications, please visit our [website](#).

DATA IMAGES

GTX83556 IHC-P Image

IHC-P analysis of human ovary adenocarcinoma tissue using GTX83556 SSSCA1 antibody [2F5].


GTX83556 IHC-P Image

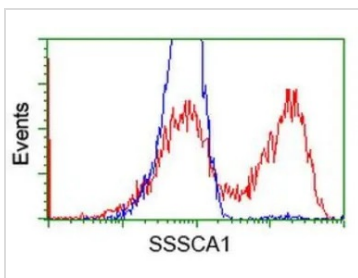
IHC-P analysis of human prostate tissue using GTX83556 SSSCA1 antibody [2F5].


GTX83556 WB Image

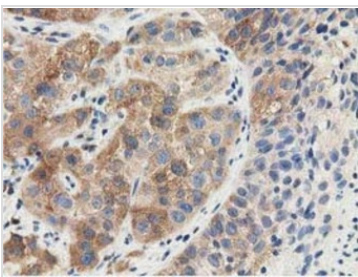
WB analysis of various cell lines using GTX83556 SSSCA1 antibody [2F5].

Loading : 35 ug per lane

Dilution : 1:200


GTX83556 FCM Image

FACS analysis of HEK293T cells transfected with either SSSCA1 plasmid(Red) or empty vector control plasmid(Blue) using GTX83556 SSSCA1 antibody [2F5].


GTX83556 IHC-P Image

IHC-P analysis of human bladder carcinoma tissue using GTX83556 SSSCA1 antibody [2F5].



For full product information, images and publications, please visit our [website](http://www.genetex.com).