

SSB antibody [1E11]

Cat. No. GTX83558

| | |
|---------------------|--------------------------------|
| Host | Mouse |
| Clonality | Monoclonal |
| Isotype | IgG2a |
| Applications | WB, ICC/IF, FCM, IP |
| Reactivity | Human, Mouse, Rat, Dog, Monkey |

Package
100 µl

Applications

Application Note

*Optimal dilutions/concentrations should be determined by the researcher.

| Suggested dilution | Recommended dilution |
|--------------------|----------------------|
| WB | 1:1000-1:2000 |
| ICC/IF | 1:50-1:100 |
| FCM | 1:100 |
| IP | 2ug/500ul |

Not tested in other applications.

Calculated MW 47 kDa. ([Note](#))

Properties

| | |
|----------------------|--|
| Form | Liquid |
| Buffer | PBS, 1% BSA, 50% Glycerol |
| Preservative | 0.02% Sodium azide |
| Storage | Store as concentrated solution. Centrifuge briefly prior to opening vial. For short-term storage (1-2 weeks), store at 4°C. For long-term storage, aliquot and store at -20°C or below. Avoid multiple freeze-thaw cycles. |
| Concentration | 2.8 mg/ml (Please refer to the vial label for the specific concentration.) |
| Immunogen | Full-length protein expressed in 293T cell transfected with human SSB expression vector |
| Purification | Purified by affinity chromatography |
| Conjugation | Unconjugated |

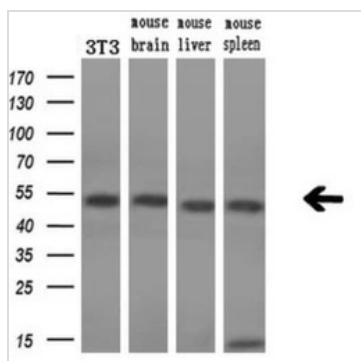
Note

For laboratory research use only. Not for any clinical, therapeutic, or diagnostic use in humans or animals. Not for animal or human consumption.

Purchasers shall not, and agree not to enable third parties to, analyze, copy, reverse engineer or otherwise attempt to determine the structure or sequence of the product.



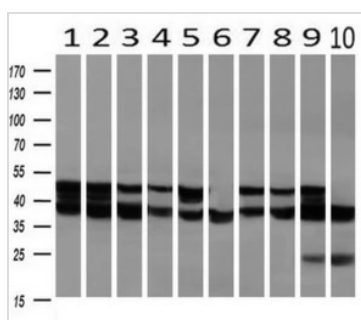
For full product information, images and publications, please visit our [website](#).

DATA IMAGES

GTX83558 WB Image

WB analysis of various samples using GTX83558 SSB antibody [1E11].

Loading : 10 ug per lane

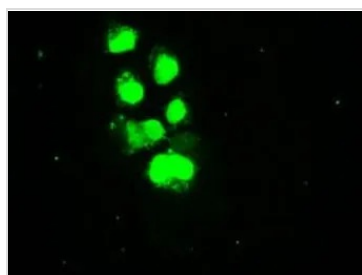
Dilution : 1:200


GTX83558 WB Image

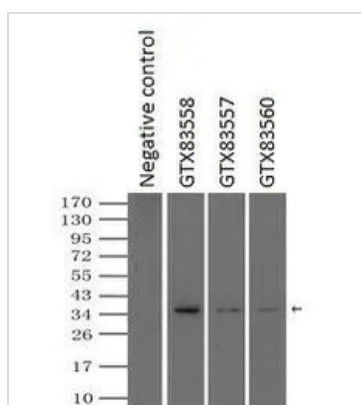
WB analysis of human tissues (Lane 1-Testis ; Lane 2-Omentum ; Lane 3-Uterus ; Lane 4-Breast ; Lane 5-Brain ; Lane 6-Liver ; Lane 7-Ovary ; Lane 8-Thyroid gland ; Lane 9-colon ; Lane 10-spleen) using GTX83558 SSB antibody [1E11].

Loading : 10 ug per lane

Dilution : 1:1000


GTX83558 ICC/IF Image

ICC/IF analysis of COS7 cells transiently transfected with SSB plasmid using GTX83558 SSB antibody [1E11].


GTX83558 IP Image

IP analysis of DDDDK tagged SSB overexpressed HEK293T lysate using GTX83558 SSB antibody [1E11]. After extensive wash to remove any non-specific binding, the immuno-precipitated products were analyzed with rabbit anti-DDDDK polyclonal antibody.

IP reaction : 2μg antibody / 500μl cell lysate



For full product information, images and publications, please visit our [website](https://www.genetex.com).