

Serine racemase antibody [9E8]

Cat. No. GTX83567

Host	Mouse
Clonality	Monoclonal
Isotype	IgG1
Applications	WB, ICC/IF, IHC-P, IHC-Fr, FCM
Reactivity	Human, Mouse, Rat, Monkey

References (1)

Package

100 µl

Applications

Application Note

*Optimal dilutions/concentrations should be determined by the researcher.

Suggested dilution	Recommended dilution
WB	1:200
ICC/IF	Assay dependent
IHC-P	1:100-1:200
IHC-Fr	Assay dependent
FCM	Assay dependent

Not tested in other applications.

Calculated MW 37 kDa. ([Note](#))

Properties

Form	Liquid
Buffer	PBS, 1% BSA, 50% Glycerol
Preservative	0.02% Sodium azide
Storage	Store as concentrated solution. Centrifuge briefly prior to opening vial. For short-term storage (1-2 weeks), store at 4°C. For long-term storage, aliquot and store at -20°C or below. Avoid multiple freeze-thaw cycles.
Concentration	0.86 mg/ml (Please refer to the vial label for the specific concentration.)
Immunogen	Full length human recombinant protein of human SRR(NP_068766) produced in HEK293T cell.
Purification	Purified by affinity chromatography
Conjugation	Unconjugated

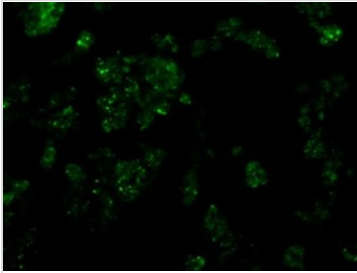


For full product information, images and publications, please visit our [website](#).

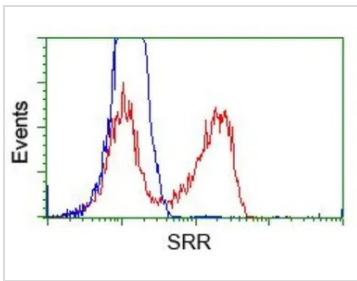
For laboratory research use only. Not for any clinical, therapeutic, or diagnostic use in humans or animals. Not for animal or human consumption.

Note

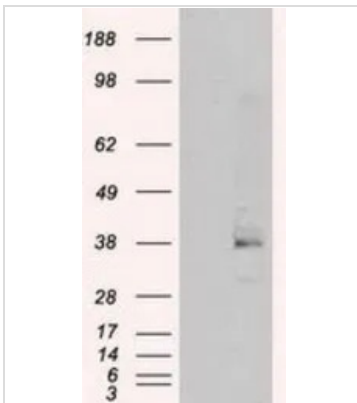
Purchasers shall not, and agree not to enable third parties to, analyze, copy, reverse engineer or otherwise attempt to determine the structure or sequence of the product.

DATA IMAGES

GTX83567 ICC/IF Image

ICC/IF analysis of HepG2 cells using GTX83567 Serine racemase antibody [9E8].

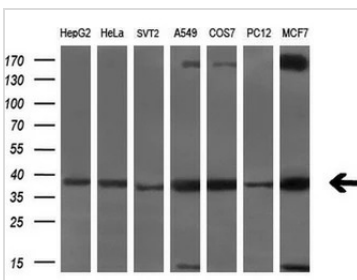

GTX83567 FCM Image

FACS analysis of HEK293T cells transfected with either Serine racemase plasmid(Red) or empty vector control plasmid(Blue) using GTX83567 Serine racemase antibody [9E8].


GTX83567 WB Image

WB analysis of HEK293T cells transfected with Serine racemase plasmid (Right) or empty vector (Left) for 48 hrs using GTX83567 Serine racemase antibody [9E8].

Loading : 5 ug per lane


GTX83567 WB Image

WB analysis of various cell lines using GTX83567 Serine racemase antibody [9E8].

Loading : 10 ug per lane

Dilution : 1:2000



For full product information, images and publications, please visit our [website](http://www.genetex.com).