

## Serine racemase antibody [7E8]

Cat. No. GTX83568

Host	Mouse
Clonality	Monoclonal
Isotype	IgG1
Applications	WB, ICC/IF, IHC-P, FCM
Reactivity	Human, Monkey

Package  
100 µl

## Applications

## Application Note

\*Optimal dilutions/concentrations should be determined by the researcher.

Suggested dilution	Recommended dilution
WB	1:200
ICC/IF	1:100
IHC-P	Assay dependent
FCM	Assay dependent

Not tested in other applications.

Calculated MW 37 kDa. ( [Note](#) )

## Properties

Form	Liquid
Buffer	PBS, 1% BSA, 50% Glycerol
Preservative	0.02% Sodium azide
Storage	Store as concentrated solution. Centrifuge briefly prior to opening vial. For short-term storage (1-2 weeks), store at 4°C. For long-term storage, aliquot and store at -20°C or below. Avoid multiple freeze-thaw cycles.
Concentration	0.66 mg/ml (Please refer to the vial label for the specific concentration.)
Immunogen	Full length human recombinant protein of human SRR(NP_068766) produced in HEK293T cell.
Purification	Purified by affinity chromatography
Conjugation	Unconjugated

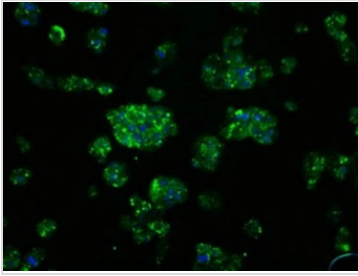
## Note

For laboratory research use only. Not for any clinical, therapeutic, or diagnostic use in humans or animals. Not for animal or human consumption.

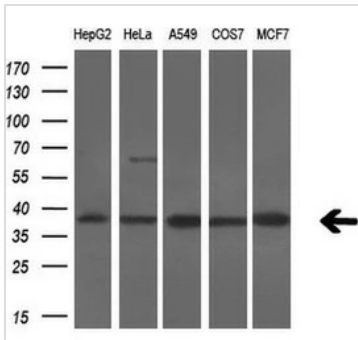
Purchasers shall not, and agree not to enable third parties to, analyze, copy, reverse engineer or otherwise attempt to determine the structure or sequence of the product.



For full product information, images and publications, please visit our [website](#).

**DATA IMAGES**

**GTX83568 ICC/IF Image**

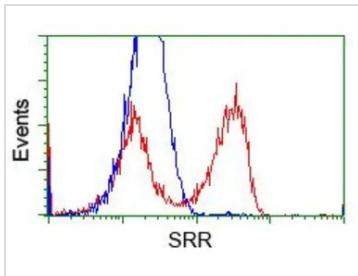
ICC/IF analysis of HepG2 cells using GTX83568 Serine racemase antibody [7E8].


**GTX83568 WB Image**

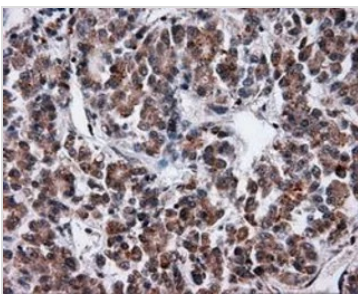
WB analysis of various cell lines using GTX83568 Serine racemase antibody [7E8].

Loading : 10 ug per lane

Dilution : 1:200


**GTX83568 FCM Image**

FACS analysis of HEK293T cells transfected with either Serine racemase plasmid(Red) or empty vector control plasmid(Blue) using GTX83568 Serine racemase antibody [7E8].


**GTX83568 IHC-P Image**

IHC-P analysis of liver carcinoma tissue using GTX83568 Serine racemase antibody [7E8].

Antigen retrieval : Heat-induced epitope retrieval by 10mM citrate buffer, pH6.0, 100°C for 10min.

Dilution : 1:50



For full product information, images and publications, please visit our [website](https://www.genetex.com).