

Sorbitol Dehydrogenase antibody [2A10]

Cat. No. GTX83583

Host	Mouse
Clonality	Monoclonal
Isotype	IgG2b
Application	WB, IP
Reactivity	Human

Package
100 µl

APPLICATION

Application Note

*Optimal dilutions/concentrations should be determined by the researcher.

Suggested dilution	Recommended dilution
WB	1:2000
IP	2ug/500ul

Not tested in other applications.

Calculated MW 38 kDa. ([Note](#))

PROPERTIES

Form	Liquid
Buffer	PBS, 1% BSA, 50% Glycerol
Preservative	0.02% Sodium azide
Storage	Store as concentrated solution. Centrifuge briefly prior to opening vial. For short-term storage (1-2 weeks), store at 4°C. For long-term storage, aliquot and store at -20°C or below. Avoid multiple freeze-thaw cycles.
Concentration	0.7 mg/ml (Please refer to the vial label for the specific concentration.)
Immunogen	Full-length protein expressed in 293T cell transfected with human SORD expression vector
Purification	Purified IgG
Conjugation	Unconjugated

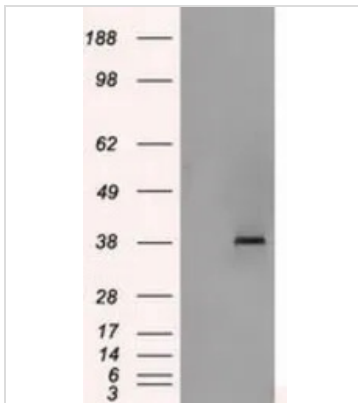
Note

For laboratory research use only. Not for any clinical, therapeutic, or diagnostic use in humans or animals. Not for animal or human consumption.

Purchasers shall not, and agree not to enable third parties to, analyze, copy, reverse engineer or otherwise attempt to determine the structure or sequence of the product.

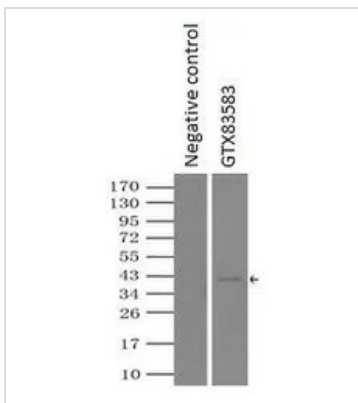


For full product information, images and publications, please visit our [website](#).

DATA IMAGES

GTX83583 WB Image

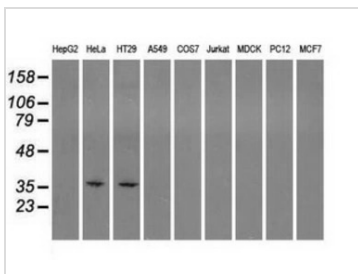
WB analysis of HEK293T cells transfected with Sorbitol Dehydrogenase plasmid (Right) or empty vector (Left) for 48 hrs using GTX83583 Sorbitol Dehydrogenase antibody [2A10].

Loading : 5 ug per lane


GTX83583 IP Image

IP analysis of DDDDK tagged Sorbitol Dehydrogenase overexpressed HEK293T lysate using GTX83583 Sorbitol Dehydrogenase antibody [2A10]. After extensive wash to remove any non-specific binding, the immuno-precipitated products were analyzed with rabbit anti-DDDDK polyclonal antibody.

IP reaction : 2µg antibody / 500µl cell lysate


GTX83583 WB Image

WB analysis of various cell lines using GTX83583 Sorbitol Dehydrogenase antibody [2A10].

Loading : 35 ug per lane



For full product information, images and publications, please visit our [website](https://www.genetex.com).