

Sorbitol Dehydrogenase antibody [1D5]

Cat. No. GTX83588

Host	Mouse
Clonality	Monoclonal
Isotype	IgG2a
Applications	WB, ICC/IF, FCM
Reactivity	Human, Rat, Monkey

References (2)

Package

100 µl

Applications

Application Note

*Optimal dilutions/concentrations should be determined by the researcher.

Suggested dilution	Recommended dilution
WB	1:2000
ICC/IF	1:100
FCM	1:100

Not tested in other applications.

Calculated MW 38 kDa. ([Note](#))

Properties

Form	Liquid
Buffer	PBS, 1% BSA, 50% Glycerol
Preservative	0.02% Sodium azide
Storage	Store as concentrated solution. Centrifuge briefly prior to opening vial. For short-term storage (1-2 weeks), store at 4°C. For long-term storage, aliquot and store at -20°C or below. Avoid multiple freeze-thaw cycles.
Concentration	0.7 mg/ml (Please refer to the vial label for the specific concentration.)
Immunogen	Full length human recombinant protein of human SORD (NP_003095) produced in HEK293T cell.
Purification	Purified by affinity chromatography
Conjugation	Unconjugated

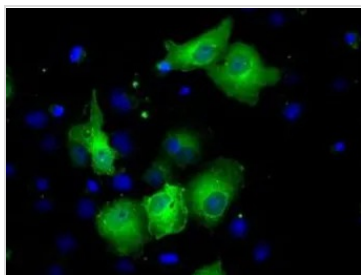
Note

For laboratory research use only. Not for any clinical, therapeutic, or diagnostic use in humans or animals. Not for animal or human consumption.

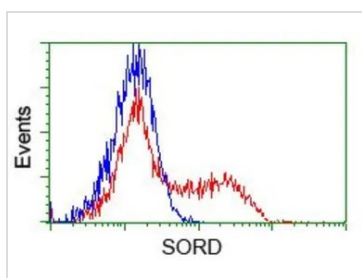
Purchasers shall not, and agree not to enable third parties to, analyze, copy, reverse engineer or otherwise attempt to determine the structure or sequence of the product.



For full product information, images and publications, please visit our [website](#).

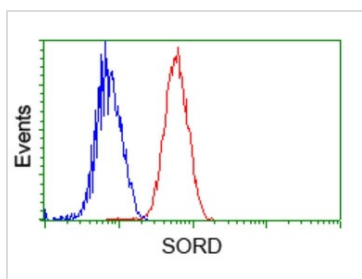
DATA IMAGES

GTX83588 ICC/IF Image

ICC/IF analysis of COS7 cells transiently transfected with Sorbitol Dehydrogenase plasmid using GTX83588 Sorbitol Dehydrogenase antibody [1D5].


GTX83588 FCM Image

FACS analysis of HEK293T cells transfected with either Sorbitol Dehydrogenase plasmid(Red) or empty vector control plasmid(Blue) using GTX83588 Sorbitol Dehydrogenase antibody [1D5].

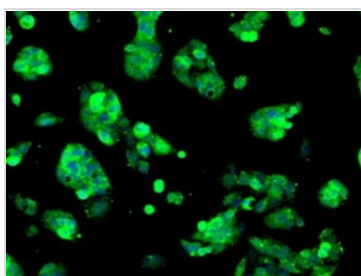
Dilution : 1:1000


GTX83588 FCM Image

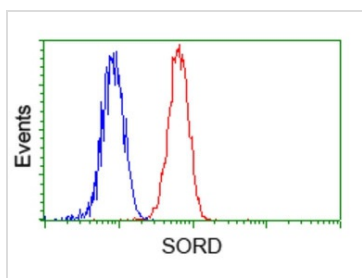
FACS analysis of Jurkat cells using GTX83588 Sorbitol Dehydrogenase antibody [1D5].

Red : Primary antibody

Blue : Negative control antibody


GTX83588 ICC/IF Image

ICC/IF analysis of HepG2 cells using GTX83588 Sorbitol Dehydrogenase antibody [1D5].


GTX83588 FCM Image

FACS analysis of HeLa cells using GTX83588 Sorbitol Dehydrogenase antibody [1D5].

Red : Primary antibody

Blue : Negative control antibody



For full product information, images and publications, please visit our [website](http://www.genetex.com).