

## SOD1 antibody [8B10]

**Cat. No. GTX83592**

<b>Host</b>	Mouse
<b>Clonality</b>	Monoclonal
<b>Isotype</b>	IgG2b
<b>Applications</b>	WB, IHC-P, FCM
<b>Reactivity</b>	Human, Mouse

**Package**  
100 µl

## Applications

**Application Note**

\*Optimal dilutions/concentrations should be determined by the researcher.

Suggested dilution	Recommended dilution
WB	1:1000-1:2000
IHC-P	1:50
FCM	1:100

Not tested in other applications.

**Calculated MW** 16 kDa. ([Note](#))

## Properties

<b>Form</b>	Liquid
<b>Buffer</b>	PBS, 1% BSA, 50% Glycerol
<b>Preservative</b>	0.02% Sodium azide
<b>Storage</b>	Store as concentrated solution. Centrifuge briefly prior to opening vial. For short-term storage (1-2 weeks), store at 4°C. For long-term storage, aliquot and store at -20°C or below. Avoid multiple freeze-thaw cycles.
<b>Concentration</b>	1 mg/ml (Please refer to the vial label for the specific concentration.)
<b>Immunogen</b>	Full length human recombinant protein of human SOD1 (NP_000445) produced in HEK293T cell.
<b>Purification</b>	Purified by affinity chromatography
<b>Conjugation</b>	Unconjugated

**Note**

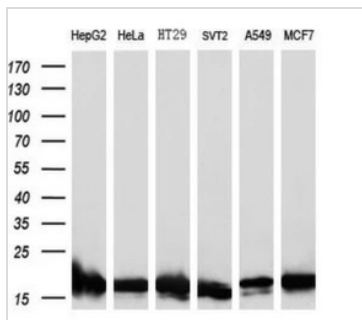
For laboratory research use only. Not for any clinical, therapeutic, or diagnostic use in humans or animals. Not for animal or human consumption.

Purchasers shall not, and agree not to enable third parties to, analyze, copy, reverse engineer or otherwise attempt to determine the structure or sequence of the product.



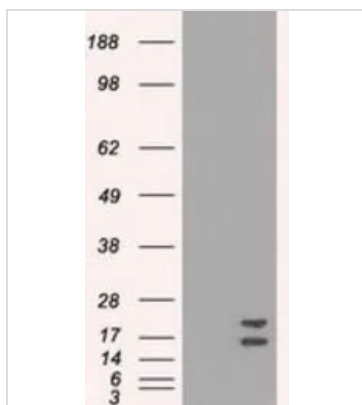
For full product information, images and publications, please visit our [website](#).

DATA IMAGES



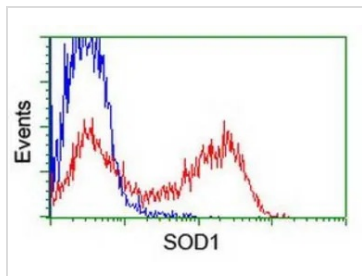
**GTX83592 WB Image**

WB analysis of various cell lines using GTX83592 SOD1 antibody [8B10].  
Loading : 35 ug per lane



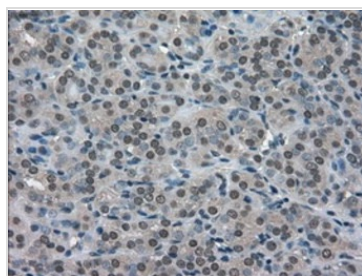
**GTX83592 WB Image**

WB analysis of HEK293T cells transfected with SOD1 plasmid (Right) or empty vector (Left) for 48 hrs using GTX83592 SOD1 antibody [8B10].  
Loading : 5 ug per lane



**GTX83592 FCM Image**

FACS analysis of HEK293T cells transfected with either SOD1 plasmid(Red) or empty vector control plasmid(Blue) using GTX83592 SOD1 antibody [8B10].



**GTX83592 IHC-P Image**

IHC-P analysis of human thyroid carcinoma tissue using GTX83592 SOD1 antibody [8B10].  
Antigen retrieval : Heat-induced epitope retrieval by 10mM citrate buffer, pH6.0, 100°C for 10min.



For full product information, images and publications, please visit our [website](#).