

SMAD2 antibody [2C10]

Cat. No. GTX83612

Host	Mouse
Clonality	Monoclonal
Isotype	IgG2b
Applications	WB, ICC/IF, FCM
Reactivity	Human, Mouse, Rat

Package
100 µl

Applications

Application Note

*Optimal dilutions/concentrations should be determined by the researcher.

Suggested dilution	Recommended dilution
WB	1:2000
ICC/IF	1:100
FCM	1:100

Not tested in other applications.

Calculated MW 52 kDa. ([Note](#))

Properties

Form	Liquid
Buffer	PBS, 1% BSA, 50% Glycerol
Preservative	0.02% Sodium azide
Storage	Store as concentrated solution. Centrifuge briefly prior to opening vial. For short-term storage (1-2 weeks), store at 4°C. For long-term storage, aliquot and store at -20°C or below. Avoid multiple freeze-thaw cycles.
Concentration	0.95 mg/ml (Please refer to the vial label for the specific concentration.)
Immunogen	Full length human recombinant protein of human SMAD2 (NP_005892) produced in HEK293T cell.
Purification	Purified by affinity chromatography
Conjugation	Unconjugated

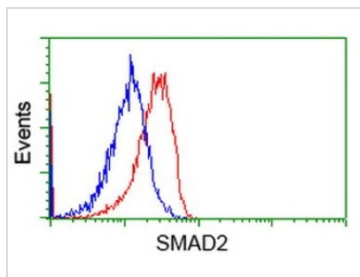
Note

For laboratory research use only. Not for any clinical, therapeutic, or diagnostic use in humans or animals. Not for animal or human consumption.

Purchasers shall not, and agree not to enable third parties to, analyze, copy, reverse engineer or otherwise attempt to determine the structure or sequence of the product.



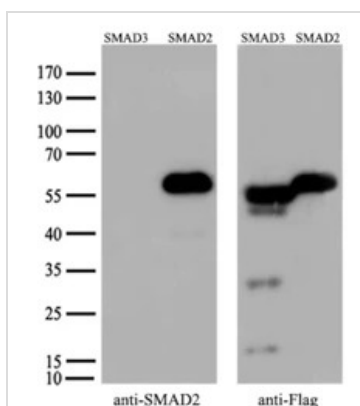
For full product information, images and publications, please visit our [website](#).

DATA IMAGES

GTx83612 FCM Image

FACS analysis of Jurkat cells using GTx83612 SMAD2 antibody [2C10].

Red : Primary antibody

Blue : Negative control antibody


GTx83612 WB Image

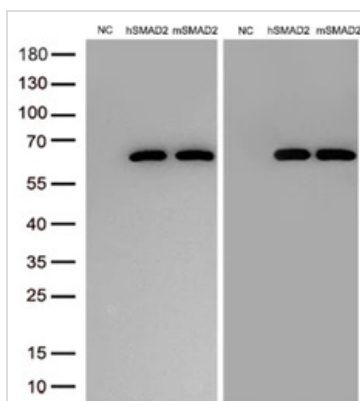
WB analysis of various samples using GTx83612 SMAD2 antibody [2C10]. The right blot is the tag result.

Lane 1 : 293T cells transfected with human SMAD3

Lane 2 : 293T cells transfected with human SMAD2

Dilution : 1:500

Loading : 5 µg


GTx83612 WB Image

WB analysis of various samples using GTx83612 SMAD2 antibody [2C10]. The right blot is the tag result.

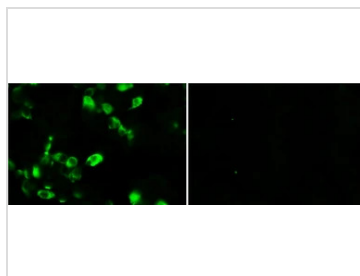
Lane 1 : 293T cells transfected with empty vector

Lane 2 : 293T cells transfected with human SMAD2

Lane 3 : 293T cells transfected with mouse SMAD2

Dilution : 1:10000

Loading : 15 µg


GTx83612 ICC/IF Image

ICC/IF analysis of 293T cells transfected with human SMAD2 (left) or empty vector (right) using GTx83612 SMAD2 antibody [2C10].

Dilution : 1:100



For full product information, images and publications, please visit our [website](https://www.genetex.com).