

## SMAD2 antibody [4G7]

Cat. No. GTX83613

Host	Mouse
Clonality	Monoclonal
Isotype	IgG2b
Applications	WB, ICC/IF, FCM
Reactivity	Human, Mouse, Rat

Package  
100 µl

## Applications

## Application Note

\*Optimal dilutions/concentrations should be determined by the researcher.

Suggested dilution	Recommended dilution
WB	1:500-1:2000
ICC/IF	1:100
FCM	1:100

Not tested in other applications.

Calculated MW 52 kDa. ( [Note](#) )

## Properties

Form	Liquid
Buffer	PBS, 1% BSA, 50% Glycerol
Preservative	0.02% Sodium azide
Storage	Store as concentrated solution. Centrifuge briefly prior to opening vial. For short-term storage (1-2 weeks), store at 4°C. For long-term storage, aliquot and store at -20°C or below. Avoid multiple freeze-thaw cycles.
Concentration	0.92 mg/ml (Please refer to the vial label for the specific concentration.)
Immunogen	Full length human recombinant protein of human SMAD2 (NP_005892) produced in HEK293T cell.
Purification	Purified by affinity chromatography
Conjugation	Unconjugated

## Note

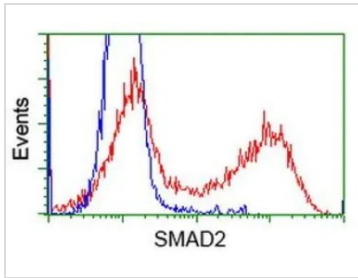
For laboratory research use only. Not for any clinical, therapeutic, or diagnostic use in humans or animals. Not for animal or human consumption.

Purchasers shall not, and agree not to enable third parties to, analyze, copy, reverse engineer or otherwise attempt to determine the structure or sequence of the product.



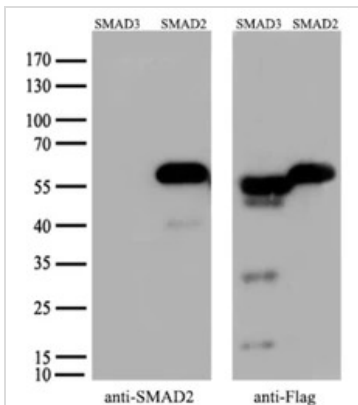
For full product information, images and publications, please visit our [website](#).

DATA IMAGES



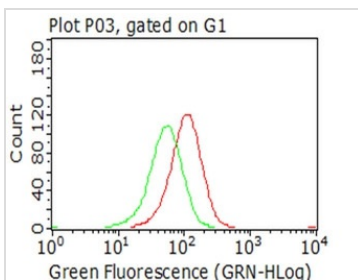
**GTX83613 FCM Image**

FACS analysis of HEK293T cells transfected with either SMAD2 plasmid(Red) or empty vector control plasmid(Blue) using GTX83613 SMAD2 antibody [4G7].



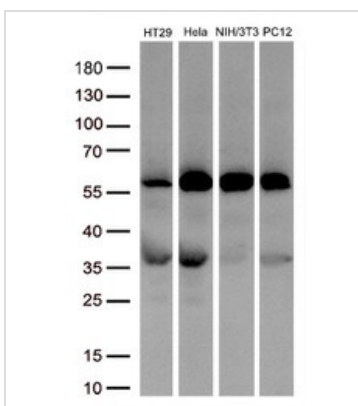
**GTX83613 WB Image**

WB analysis of various samples using GTX83613 SMAD2 antibody [4G7]. The right blot is the tag result.  
Lane 1 : 293T cells transfected with human SMAD3  
Lane 2 : 293T cells transfected with human SMAD2  
Dilution : 1:500  
Loading : 5 µg



**GTX83613 FCM Image**

FCM analysis of permeabilized Jurkat cells using GTX83613 SMAD2 antibody [4G7].  
Red line : Primary antibody  
Green line : Isotype control  
Dilution : 1:100



**GTX83613 WB Image**

WB analysis of various samples using GTX83613 SMAD2 antibody [4G7].  
Dilution : 1:1000  
Loading : 30 µg



For full product information, images and publications, please visit our [website](http://www.genetex.com).