

## SLC7A8 antibody [8B12]

Cat. No. GTX83620

Host	Mouse
Clonality	Monoclonal
Isotype	IgG1
Applications	WB, IHC-P
Reactivity	Human, Mouse, Monkey

Package  
100 µl

## Applications

## Application Note

\*Optimal dilutions/concentrations should be determined by the researcher.

Suggested dilution	Recommended dilution
WB	1:200-1:1000
IHC-P	Assay dependent

Not tested in other applications.

Calculated MW 58 kDa. ( [Note](#) )

## Properties

Form	Liquid
Buffer	PBS, 1% BSA, 50% Glycerol
Preservative	0.02% Sodium azide
Storage	Store as concentrated solution. Centrifuge briefly prior to opening vial. For short-term storage (1-2 weeks), store at 4°C. For long-term storage, aliquot and store at -20°C or below. Avoid multiple freeze-thaw cycles.
Concentration	1 mg/ml (Please refer to the vial label for the specific concentration.)
Immunogen	Full-length protein expressed in 293T cell transfected with human SLC7A8 expression vector
Purification	Purified by affinity chromatography From tissue culture supernatant
Conjugation	Unconjugated

## Note

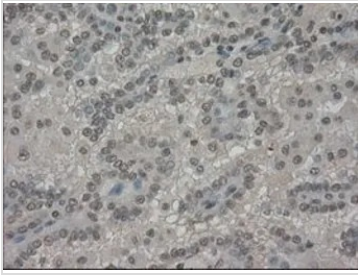
For laboratory research use only. Not for any clinical, therapeutic, or diagnostic use in humans or animals. Not for animal or human consumption.

Purchasers shall not, and agree not to enable third parties to, analyze, copy, reverse engineer or otherwise attempt to determine the structure or sequence of the product.



For full product information, images and publications, please visit our [website](#).

## DATA IMAGES

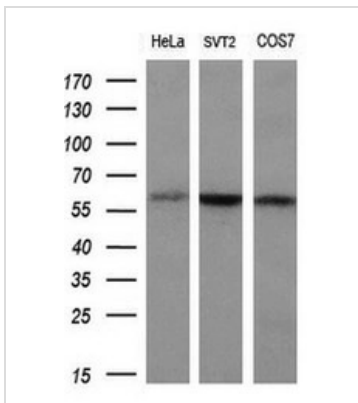


### GTX83620 IHC-P Image

IHC-P analysis of kidney carcinoma tissue using GTX83620 SLC7A8 antibody [8B12].

Antigen retrieval : Heat-induced epitope retrieval by 10mM citrate buffer, pH6.0, 100°C for 10min.

Dilution : 1:50

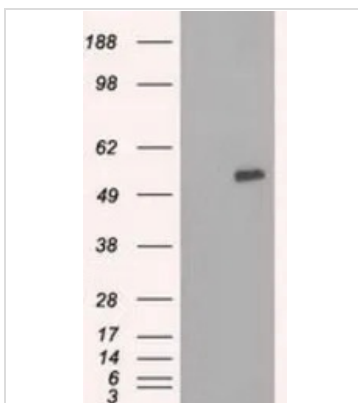


### GTX83620 WB Image

WB analysis of various cell lines using GTX83620 SLC7A8 antibody [8B12].

Loading : 10 ug per lane

Dilution : 1:200



### GTX83620 WB Image

WB analysis of HEK293T cells transfected with SLC7A8 plasmid (Right) or empty vector (Left) for 48 hrs using GTX83620 SLC7A8 antibody [8B12].

Loading : 5 ug per lane



For full product information, images and publications, please visit our [website](https://www.genetex.com).