

## SLC7A8 antibody [4H10]

Cat. No. GTX83621

Host	Mouse
Clonality	Monoclonal
Isotype	IgG1
Applications	ICC/IF, FCM, IP
Reactivity	Human

Package  
100 µl

## Applications

## Application Note

\*Optimal dilutions/concentrations should be determined by the researcher.

Suggested dilution	Recommended dilution
ICC/IF	Assay dependent
FCM	1:100
IP	2ug/500ul

Not tested in other applications.

## Properties

Form	Liquid
Buffer	PBS, 1% BSA, 50% Glycerol
Preservative	0.02% Sodium azide
Storage	Store as concentrated solution. Centrifuge briefly prior to opening vial. For short-term storage (1-2 weeks), store at 4°C. For long-term storage, aliquot and store at -20°C or below. Avoid multiple freeze-thaw cycles.
Concentration	0.65 mg/ml (Please refer to the vial label for the specific concentration.)
Immunogen	Full length human recombinant protein of human SLC7A8 (NP_036376) produced in HEK293T cell.
Purification	Purified by affinity chromatography
Conjugation	Unconjugated

## Note

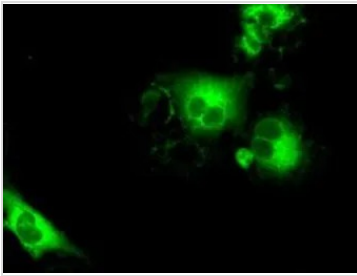
For laboratory research use only. Not for any clinical, therapeutic, or diagnostic use in humans or animals. Not for animal or human consumption.

Purchasers shall not, and agree not to enable third parties to, analyze, copy, reverse engineer or otherwise attempt to determine the structure or sequence of the product.



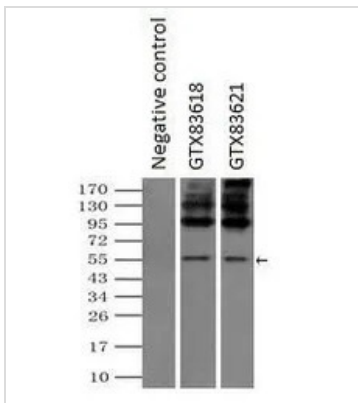
For full product information, images and publications, please visit our [website](#).

## DATA IMAGES



### GTx83621 ICC/IF Image

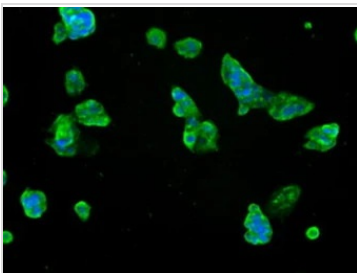
ICC/IF analysis of COS7 cells transiently transfected with SLC7A8 plasmid using GTx83621 SLC7A8 antibody [4H10].



### GTx83621 IP Image

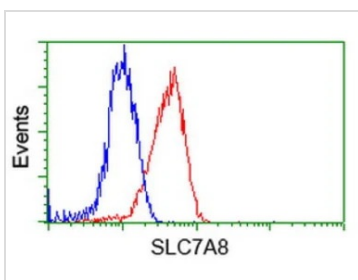
IP analysis of DDDDK tagged SLC7A8 overexpressed HEK293T lysate using GTx83621 SLC7A8 antibody [4H10]. After extensive wash to remove any non-specific binding, the immuno-precipitated products were analyzed with rabbit anti-DDDDK polyclonal antibody.

IP reaction : 2µg antibody / 500µl cell lysate



### GTx83621 ICC/IF Image

ICC/IF analysis of HepG2 cells using GTx83621 SLC7A8 antibody [4H10].



### GTx83621 FCM Image

FACS analysis of Jurkat cells using GTx83621 SLC7A8 antibody [4H10].

Red : Primary antibody

Blue : Negative control antibody



For full product information, images and publications, please visit our [website](https://www.genetex.com).