

GluT6 antibody [7E3]

Cat. No. GTX83624

Host	Mouse
Clonality	Monoclonal
Isotype	IgG2a
Applications	WB, ICC/IF, IHC-P
Reactivity	Human, Mouse, Rat, Dog, Monkey

Package
100 µl

Applications

Application Note

*Optimal dilutions/concentrations should be determined by the researcher.

Suggested dilution	Recommended dilution
WB	1:200
ICC/IF	Assay dependent
IHC-P	1:200

Not tested in other applications.

Calculated MW 55 kDa. ([Note](#))

Properties

Form	Liquid
Buffer	PBS, 1% BSA, 50% Glycerol
Preservative	0.02% Sodium azide
Storage	Store as concentrated solution. Centrifuge briefly prior to opening vial. For short-term storage (1-2 weeks), store at 4°C. For long-term storage, aliquot and store at -20°C or below. Avoid multiple freeze-thaw cycles.
Concentration	1.47 mg/ml (Please refer to the vial label for the specific concentration.)
Immunogen	Full-length protein expressed in 293T cell transfected with human SLC2A6 expression vector
Purification	Purified by affinity chromatography
Conjugation	Unconjugated

Note

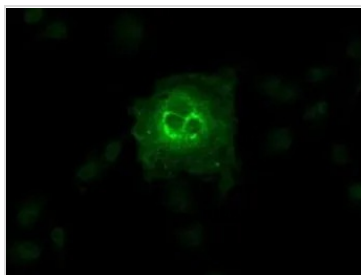
For laboratory research use only. Not for any clinical, therapeutic, or diagnostic use in humans or animals. Not for animal or human consumption.

Purchasers shall not, and agree not to enable third parties to, analyze, copy, reverse engineer or otherwise attempt to determine the structure or sequence of the product.



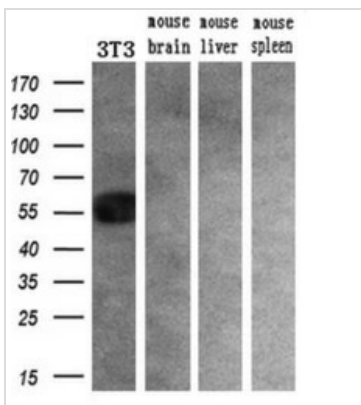
For full product information, images and publications, please visit our [website](#).

DATA IMAGES



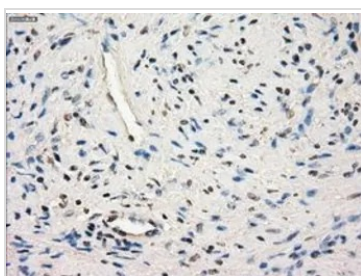
GTX83624 ICC/IF Image

ICC/IF analysis of COS7 cells transiently transfected with GluT6 plasmid using GTX83624 GluT6 antibody [7E3].



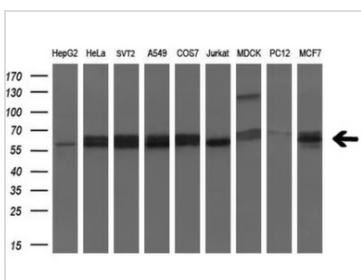
GTX83624 WB Image

WB analysis of various samples using GTX83624 GluT6 antibody [7E3].
 Loading : 10 ug per lane
 Dilution : 1:200



GTX83624 IHC-P Image

IHC-P analysis of prostate tissue using GTX83624 GluT6 antibody [7E3].
 Antigen retrieval : Heat-induced epitope retrieval by 10mM citrate buffer, pH6.0, 100°C for 10min.
 Dilution : 1:50



GTX83624 WB Image

WB analysis of various cell lines using GTX83624 GluT6 antibody [7E3].
 Loading : 35 ug per lane
 Dilution : 1:200



For full product information, images and publications, please visit our [website](#).