

GLUT5 antibody [9F3]

Cat. No. GTX83628

Host	Mouse
Clonality	Monoclonal
Isotype	IgG1
Applications	WB, IHC-P, FCM, IP
Reactivity	Human, Mouse, Monkey

References (5)
 Package
 100 µl

Applications

Application Note

*Optimal dilutions/concentrations should be determined by the researcher.

Suggested dilution	Recommended dilution
WB	1:200-1:1000
IHC-P	1:50
FCM	1:100
IP	2ug/500ul

Not tested in other applications.

Calculated MW 55 kDa. ([Note](#))

Properties

Form	Liquid
Buffer	PBS, 1% BSA, 50% Glycerol
Preservative	0.02% Sodium azide
Storage	Store as concentrated solution. Centrifuge briefly prior to opening vial. For short-term storage (1-2 weeks), store at 4°C. For long-term storage, aliquot and store at -20°C or below. Avoid multiple freeze-thaw cycles.
Concentration	1 mg/ml (Please refer to the vial label for the specific concentration.)
Immunogen	Full length human recombinant protein of human SLC2A5 (NP_003030) produced in HEK293T cell.
Purification	Purified by affinity chromatography
Conjugation	Unconjugated

Note

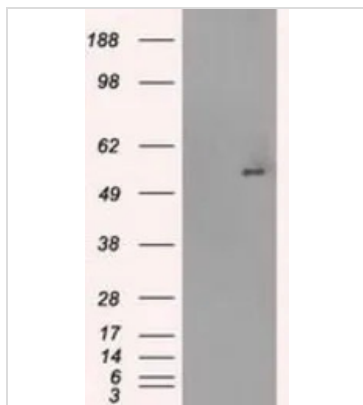
For laboratory research use only. Not for any clinical, therapeutic, or diagnostic use in humans or animals. Not for animal or human consumption.

Purchasers shall not, and agree not to enable third parties to, analyze, copy, reverse engineer or otherwise attempt to determine the structure or sequence of the product.



For full product information, images and publications, please visit our [website](#).

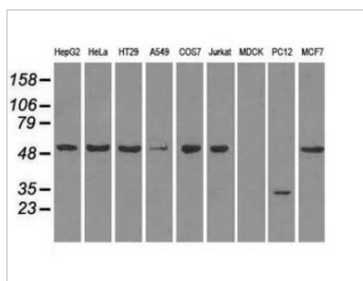
DATA IMAGES



GTX83628 WB Image

WB analysis of HEK293T cells transfected with GLUT5 plasmid (Right) or empty vector (Left) for 48 hrs using GTX83628 GLUT5 antibody [9F3].

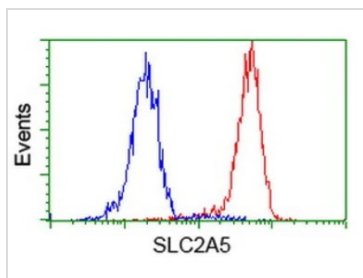
Loading : 5 ug per lane



GTX83628 WB Image

WB analysis of various cell lines using GTX83628 GLUT5 antibody [9F3].

Loading : 35 ug per lane

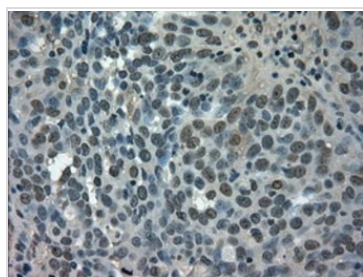


GTX83628 FCM Image

FACS analysis of HeLa cells using GTX83628 GLUT5 antibody [9F3].

Red : Primary antibody

Blue : Negative control antibody



GTX83628 IHC-P Image

IHC-P analysis of human ovary adenocarcinoma tissue using GTX83628 GLUT5 antibody [9F3].

Antigen retrieval : Heat-induced epitope retrieval by 10mM citrate buffer, pH6.0, 100°C for 10min.



For full product information, images and publications, please visit our [website](#).