

GLUT5 antibody [20E1]

Cat. No. GTX83631

Host	Mouse
Clonality	Monoclonal
Isotype	IgG1
Applications	WB, ICC/IF, IHC-P, FCM
Reactivity	Human

Package
100 µl

Applications

Application Note

*Optimal dilutions/concentrations should be determined by the researcher.

Suggested dilution	Recommended dilution
WB	1:2000
ICC/IF	1:50-1:100
IHC-P	1:50
FCM	1:100

Not tested in other applications.

Calculated MW 55 kDa. ([Note](#))

Properties

Form	Liquid
Buffer	PBS, 1% BSA, 50% Glycerol
Preservative	0.02% Sodium azide
Storage	Store as concentrated solution. Centrifuge briefly prior to opening vial. For short-term storage (1-2 weeks), store at 4°C. For long-term storage, aliquot and store at -20°C or below. Avoid multiple freeze-thaw cycles.
Concentration	1 mg/ml (Please refer to the vial label for the specific concentration.)
Immunogen	Full length human recombinant protein of human SLC2A5 (NP_003030) produced in HEK293T cell.
Purification	Purified by affinity chromatography From tissue culture supernatant
Conjugation	Unconjugated

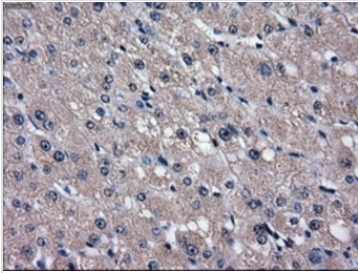
For full product information, images and publications, please visit our [website](#).

For laboratory research use only. Not for any clinical, therapeutic, or diagnostic use in humans or animals. Not for animal or human consumption.

Note

Purchasers shall not, and agree not to enable third parties to, analyze, copy, reverse engineer or otherwise attempt to determine the structure or sequence of the product.

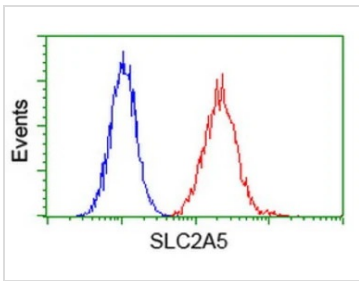
DATA IMAGES



GTX83631 IHC-P Image

IHC-P analysis of human liver tissue using GTX83631 GLUT5 antibody [20E1].

Antigen retrieval : Heat-induced epitope retrieval by 10mM citrate buffer, pH6.0, 100°C for 10min.

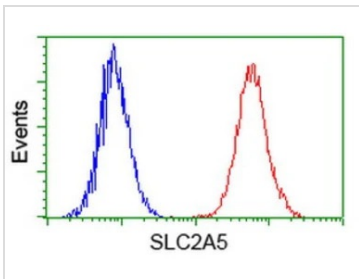


GTX83631 FCM Image

FACS analysis of HeLa cells using GTX83631 GLUT5 antibody [20E1].

Red : Primary antibody

Blue : Negative control antibody

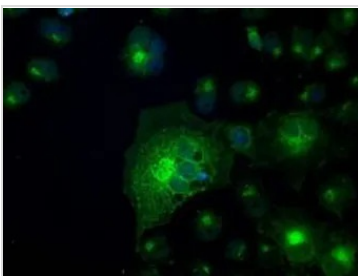


GTX83631 FCM Image

FACS analysis of Jurkat cells using GTX83631 GLUT5 antibody [20E1].

Red : Primary antibody

Blue : Negative control antibody



GTX83631 ICC/IF Image

ICC/IF analysis of COS7 cells transiently transfected with GLUT5 plasmid using GTX83631 GLUT5 antibody [20E1].



For full product information, images and publications, please visit our [website](https://www.genetex.com).