

VMAT2 antibody [9E11]

Cat. No. GTX83635

Host	Mouse
Clonality	Monoclonal
Isotype	IgG1
Applications	WB, ICC/IF, IHC-P, FCM
Reactivity	Human, Mouse

Package
100 µl

Applications

Application Note

*Optimal dilutions/concentrations should be determined by the researcher.

Suggested dilution	Recommended dilution
WB	1:1000-1:2000
ICC/IF	1:100
IHC-P	1:50
FCM	1:100

Not tested in other applications.

Calculated MW 56 kDa. ([Note](#))

Properties

Form	Liquid
Buffer	PBS, 1% BSA, 50% Glycerol
Preservative	0.02% Sodium azide
Storage	Store as concentrated solution. Centrifuge briefly prior to opening vial. For short-term storage (1-2 weeks), store at 4°C. For long-term storage, aliquot and store at -20°C or below. Avoid multiple freeze-thaw cycles.
Concentration	1 mg/ml (Please refer to the vial label for the specific concentration.)
Immunogen	Full-length protein expressed in 293T cell transfected with human SLC18A2 expression vector .
Purification	Purified by affinity chromatography
Conjugation	Unconjugated

Note

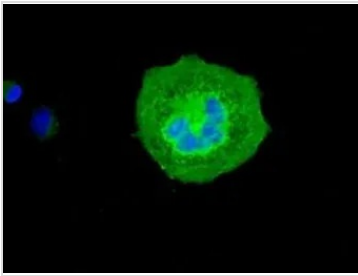
For laboratory research use only. Not for any clinical, therapeutic, or diagnostic use in humans or animals. Not for animal or human consumption.

Purchasers shall not, and agree not to enable third parties to, analyze, copy, reverse engineer or otherwise attempt to determine the structure or sequence of the product.



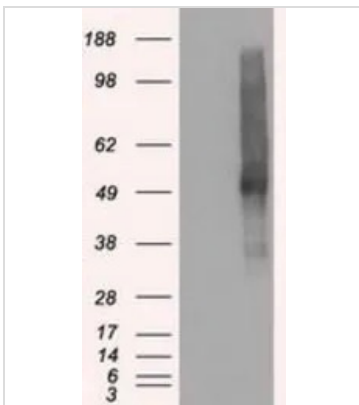
For full product information, images and publications, please visit our [website](#).

DATA IMAGES



GTX83635 ICC/IF Image

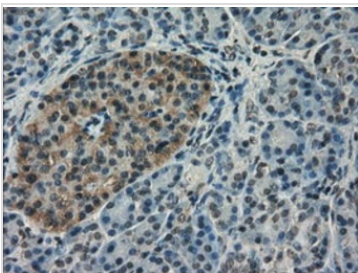
ICC/IF analysis of COS7 cells transiently transfected with VMAT2 plasmid using GTX83635 VMAT2 antibody [9E11].



GTX83635 WB Image

WB analysis of HEK293T cells transfected with VMAT2 plasmid (Right) or empty vector (Left) for 48 hrs using GTX83635 VMAT2 antibody [9E11].

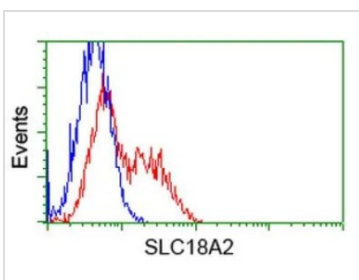
Loading : 5 ug per lane



GTX83635 IHC-P Image

IHC-P analysis of human pancreas tissue using GTX83635 VMAT2 antibody [9E11].

Antigen retrieval : Heat-induced epitope retrieval by 10mM citrate buffer, pH6.0, 100°C for 10min.



GTX83635 FCM Image

FACS analysis of HEK293T cells transfected with either VMAT2 plasmid(Red) or empty vector control plasmid(Blue) using GTX83635 VMAT2 antibody [9E11].



For full product information, images and publications, please visit our [website](https://www.genetex.com).