

SIGLEC9 antibody [6D8]

Cat. No. GTX83649

| | |
|--------------------|--------------------|
| Host | Mouse |
| Clonality | Monoclonal |
| Isotype | IgG1 |
| Application | WB, ICC/IF, IHC-P |
| Reactivity | Human, Dog, Monkey |

Package
100 µl

APPLICATION

Application Note

*Optimal dilutions/concentrations should be determined by the researcher.

| Suggested dilution | Recommended dilution |
|--------------------|----------------------|
| WB | 1:2000 |
| ICC/IF | 1:50 |
| IHC-P | 1:50 |

Not tested in other applications.

Calculated MW 50 kDa. ([Note](#))

PROPERTIES

| | |
|----------------------|--|
| Form | Liquid |
| Buffer | PBS, 1% BSA, 50% Glycerol |
| Preservative | 0.02% Sodium azide |
| Storage | Store as concentrated solution. Centrifuge briefly prior to opening vial. For short-term storage (1-2 weeks), store at 4°C. For long-term storage, aliquot and store at -20°C or below. Avoid multiple freeze-thaw cycles. |
| Concentration | 0.6 mg/ml (Please refer to the vial label for the specific concentration.) |
| Immunogen | Full length human recombinant protein of human SIGLEC9 (NP_055256) produced in HEK293T cell. |
| Purification | Purified by affinity chromatography |
| Conjugation | Unconjugated |

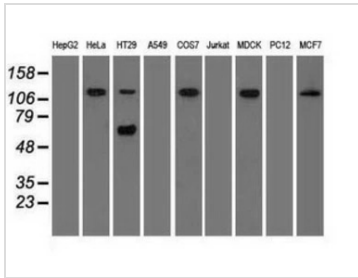
Note

For laboratory research use only. Not for any clinical, therapeutic, or diagnostic use in humans or animals. Not for animal or human consumption.

Purchasers shall not, and agree not to enable third parties to, analyze, copy, reverse engineer or otherwise attempt to determine the structure or sequence of the product.

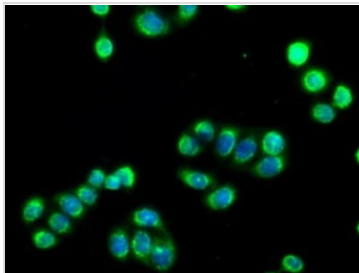


For full product information, images and publications, please visit our [website](#).

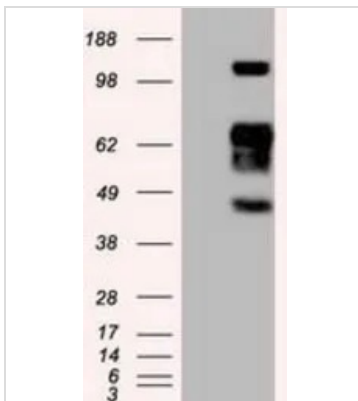
DATA IMAGES

GTX83649 WB Image

WB analysis of various cell lines using GTX83649 SIGLEC9 antibody [6D8].

Loading : 35 ug per lane

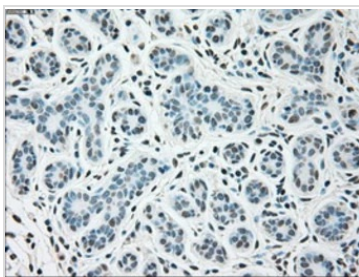

GTX83649 ICC/IF Image

ICC/IF analysis of HT29 cells using GTX83649 SIGLEC9 antibody [6D8].


GTX83649 WB Image

WB analysis of HEK293T cells transfected with SIGLEC9 plasmid (Right) or empty vector (Left) for 48 hrs using GTX83649 SIGLEC9 antibody [6D8].

Loading : 5 ug per lane


GTX83649 IHC-P Image

IHC-P analysis of human breast tissue using GTX83649 SIGLEC9 antibody [6D8].

Antigen retrieval : Heat-induced epitope retrieval by 10mM citrate buffer, pH6.0, 100°C for 10min.



For full product information, images and publications, please visit our [website](https://www.genetex.com).