

Shh antibody [10H6]

Cat. No. GTX83651

Host	Mouse
Clonality	Monoclonal
Isotype	IgG1
Applications	WB, ICC/IF
Reactivity	Human, Rat, Dog, Monkey

Package
100 µl

Applications

Application Note

*Optimal dilutions/concentrations should be determined by the researcher.

Suggested dilution	Recommended dilution
WB	1:1000-1:2000
ICC/IF	1:100

Not tested in other applications.

Calculated MW 50 kDa. ([Note](#))

Properties

Form	Liquid
Buffer	PBS, 1% BSA, 50% Glycerol
Preservative	0.02% Sodium azide
Storage	Store as concentrated solution. Centrifuge briefly prior to opening vial. For short-term storage (1-2 weeks), store at 4°C. For long-term storage, aliquot and store at -20°C or below. Avoid multiple freeze-thaw cycles.
Concentration	1 mg/ml (Please refer to the vial label for the specific concentration.)
Immunogen	Human recombinant protein fragment corresponding to amino acids 24-197 of human SHH (NP_000184) produced in E.coli.
Purification	Purified by affinity chromatography
Conjugation	Unconjugated

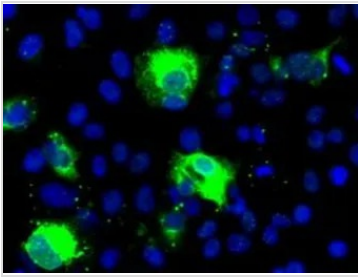
Note

For laboratory research use only. Not for any clinical, therapeutic, or diagnostic use in humans or animals. Not for animal or human consumption.

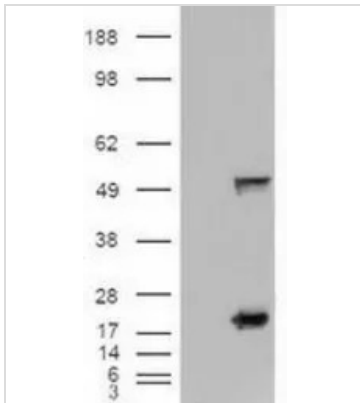
Purchasers shall not, and agree not to enable third parties to, analyze, copy, reverse engineer or otherwise attempt to determine the structure or sequence of the product.



For full product information, images and publications, please visit our [website](#).

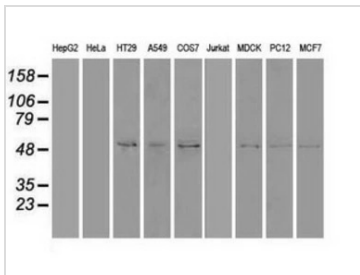
DATA IMAGES

GTx83651 ICC/IF Image

ICC/IF analysis of COS7 cells transiently transfected with Shh plasmid using GTx83651 Shh antibody [10H6].


GTx83651 WB Image

WB analysis of HEK293T cells transfected with Shh plasmid (Right) or empty vector (Left) for 48 hrs using GTx83651 Shh antibody [10H6].

Loading : 5 ug per lane


GTx83651 WB Image

WB analysis of various cell lines using GTx83651 Shh antibody [10H6].

Loading : 35 ug per lane



For full product information, images and publications, please visit our [website](https://www.genetex.com).