

SH3GL1 antibody [2F5]

Cat. No. GTX83657

Host	Mouse
Clonality	Monoclonal
Isotype	IgG1
Application	WB, ICC/IF, IHC-P, FACS
Reactivity	Human

Package
100 µl

APPLICATION

Application Note

*Optimal dilutions/concentrations should be determined by the researcher.

Suggested dilution	Recommended dilution
WB	1:2000
ICC/IF	1:100
IHC-P	1:150
FACS	1:100

Not tested in other applications.

Calculated MW 41 kDa. ([Note](#))

PROPERTIES

Form	Liquid
Buffer	PBS, 1% BSA, 50% Glycerol
Preservative	0.02% Sodium azide
Storage	Store as concentrated solution. Centrifuge briefly prior to opening vial. For short-term storage (1-2 weeks), store at 4°C. For long-term storage, aliquot and store at -20°C or below. Avoid multiple freeze-thaw cycles.
Concentration	0.64 mg/ml (Please refer to the vial label for the specific concentration.)
Immunogen	Full length human recombinant protein of human SH3GL1 (NP_003016) produced in HEK293T cell.
Purification	Purified by affinity chromatography
Conjugation	Unconjugated

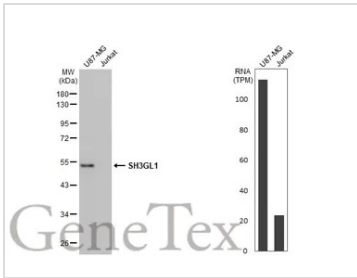
Note

For laboratory research use only. Not for any clinical, therapeutic, or diagnostic use in humans or animals. Not for animal or human consumption.

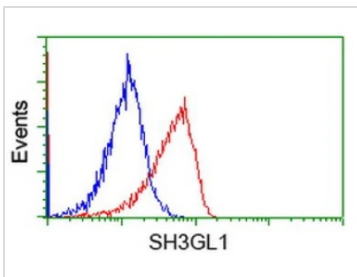
Purchasers shall not, and agree not to enable third parties to, analyze, copy, reverse engineer or otherwise attempt to determine the structure or sequence of the product.



For full product information, images and publications, please visit our [website](#).

DATA IMAGES

GTx83657 WB Image

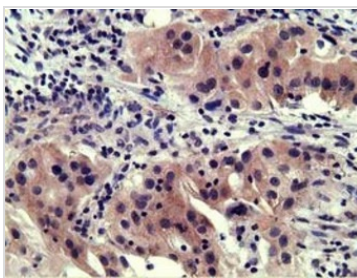
Various whole cell extracts (30 µg) were separated by 10% SDS-PAGE, and the membrane was blotted with SH3GL1 antibody [2F5] (GTx83657) diluted at 1:1000. The HRP-conjugated anti-mouse IgG antibody (GTx213111-01) was used to detect the primary antibody, and the signal was developed with Trident ECL plus-Enhanced. Corresponding RNA expression data for the same cell lines are based on Human Protein Atlas program.


GTx83657 FACS Image

FACS analysis of Jurkat cells using GTx83657 SH3GL1 antibody [2F5].

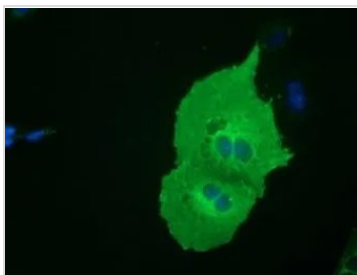
Red : Primary antibody

Blue : Negative control antibody


GTx83657 IHC-P Image

IHC-P analysis of human bladder carcinoma tissue using GTx83657 SH3GL1 antibody [2F5].

Antigen retrieval : Heat-induced epitope retrieval by 10mM citrate buffer, pH6.0, 100°C for 10min.


GTx83657 ICC/IF Image

ICC/IF analysis of COS7 cells transiently transfected with SH3GL1 plasmid using GTx83657 SH3GL1 antibody [2F5].



For full product information, images and publications, please visit our [website](https://www.genetex.com).