

## SH3GL1 antibody [3F8]

Cat. No. GTX83658

|              |                      |
|--------------|----------------------|
| Host         | Mouse                |
| Clonality    | Monoclonal           |
| Isotype      | IgG1                 |
| Applications | WB, ICC/IF, IHC-P    |
| Reactivity   | Human, Mouse, Monkey |

Package  
100 µl

## Applications

## Application Note

\*Optimal dilutions/concentrations should be determined by the researcher.

| Suggested dilution | Recommended dilution |
|--------------------|----------------------|
| WB                 | 1:2000               |
| ICC/IF             | 1:100                |
| IHC-P              | 1:150                |

Not tested in other applications.

Calculated MW 41 kDa. ( [Note](#) )

## Properties

|               |  |
|---------------|--|
| Form          | Liquid   |
| Buffer        | PBS, 1% BSA, 50% Glycerol  |
| Preservative  | 0.02% Sodium azide   |
| Storage       | Store as concentrated solution. Centrifuge briefly prior to opening vial. For short-term storage (1-2 weeks), store at 4°C. For long-term storage, aliquot and store at -20°C or below. Avoid multiple freeze-thaw cycles. |
| Concentration | 0.65 mg/ml (Please refer to the vial label for the specific concentration.)  |
| Immunogen     | Full length human recombinant protein of human SH3GL1 (NP_003016) produced in HEK293T cell.  |
| Purification  | Purified by affinity chromatography  |
| Conjugation   | Unconjugated   |

## Note

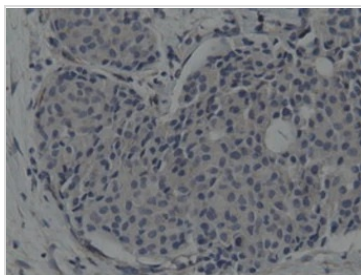
For laboratory research use only. Not for any clinical, therapeutic, or diagnostic use in humans or animals. Not for animal or human consumption.

Purchasers shall not, and agree not to enable third parties to, analyze, copy, reverse engineer or otherwise attempt to determine the structure or sequence of the product.



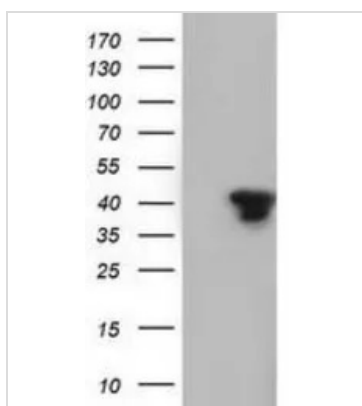
For full product information, images and publications, please visit our [website](#).

## DATA IMAGES



### GTX83658 IHC-P Image

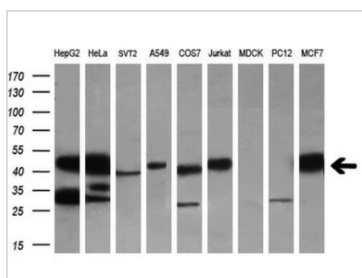
IHC-P analysis of human breast adenocarcinoma tissue using GTX83658 SH3GL1 antibody [3F8].  
Antigen retrieval : Heat-induced epitope retrieval by 10mM citrate buffer, pH6.0, 100°C for 10min.



### GTX83658 WB Image

WB analysis of HEK293T cells transfected with SH3GL1 plasmid (Right) or empty vector (Left) for 48 hrs using GTX83658 SH3GL1 antibody [3F8].

Loading : 5 ug per lane

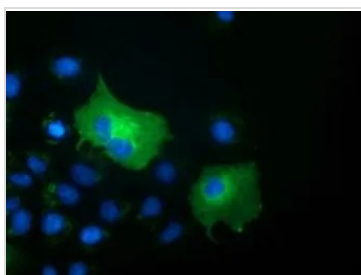


### GTX83658 WB Image

WB analysis of various cell lines using GTX83658 SH3GL1 antibody [3F8].

Loading : 35 ug per lane

Dilution : 1:200



### GTX83658 ICC/IF Image

ICC/IF analysis of COS7 cells transiently transfected with SH3GL1 plasmid using GTX83658 SH3GL1 antibody [3F8].



For full product information, images and publications, please visit our [website](https://www.genetex.com).