

alpha 1 Antitrypsin antibody [15H10]

Cat. No. GTX83665

Host	Mouse
Clonality	Monoclonal
Isotype	IgG1
Applications	WB, IHC-P, IP
Reactivity	Human, Dog, Monkey

Package
100 µl

Applications

Application Note

*Optimal dilutions/concentrations should be determined by the researcher.

Suggested dilution	Recommended dilution
WB	1:500-1:1000
IHC-P	1:150
IP	2ug/500ul

Not tested in other applications.

Calculated MW 47 kDa. ([Note](#))

Properties

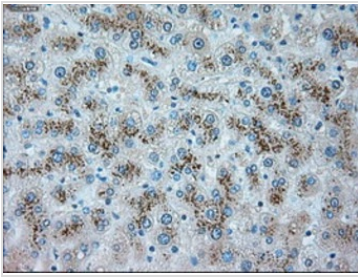
Form	Liquid
Buffer	PBS, 1% BSA, 50% Glycerol
Preservative	0.02% Sodium azide
Storage	Store as concentrated solution. Centrifuge briefly prior to opening vial. For short-term storage (1-2 weeks), store at 4°C. For long-term storage, aliquot and store at -20°C or below. Avoid multiple freeze-thaw cycles.
Concentration	0.8 mg/ml (Please refer to the vial label for the specific concentration.)
Immunogen	Full length human recombinant protein of human SERPINA1 (NP_000286) produced in HEK293T cell.
Purification	Purified by affinity chromatography
Conjugation	Unconjugated

Note

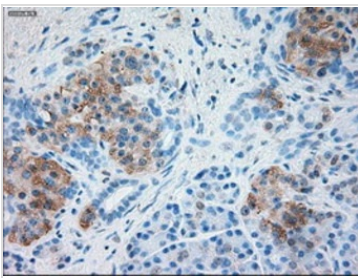
For laboratory research use only. Not for any clinical, therapeutic, or diagnostic use in humans or animals. Not for animal or human consumption.

Purchasers shall not, and agree not to enable third parties to, analyze, copy, reverse engineer or otherwise attempt to determine the structure or sequence of the product.

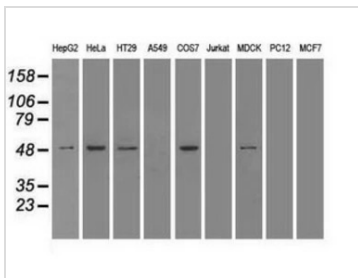
For full product information, images and publications, please visit our [website](#).

DATA IMAGES

GTX83665 IHC-P Image

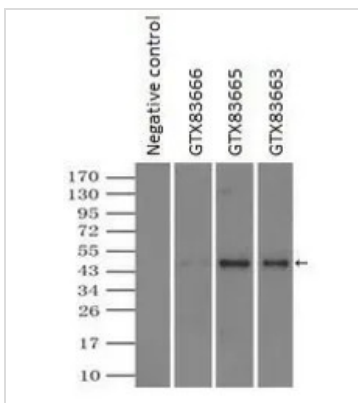
IHC-P analysis of human liver tissue using GTX83665 alpha 1 Antitrypsin antibody [15H10].
Antigen retrieval : Heat-induced epitope retrieval by 10mM citrate buffer, pH6.0, 100°C for 10min.


GTX83665 IHC-P Image

IHC-P analysis of human pancreas tissue using GTX83665 alpha 1 Antitrypsin antibody [15H10].
Antigen retrieval : Heat-induced epitope retrieval by 10mM citrate buffer, pH6.0, 100°C for 10min.


GTX83665 WB Image

WB analysis of various cell lines using GTX83665 alpha 1 Antitrypsin antibody [15H10].
Loading : 35 ug per lane


GTX83665 IP Image

IP analysis of DDDDK tagged alpha 1 Antitrypsin overexpressed HEK293T lysate using GTX83665 alpha 1 Antitrypsin antibody [15H10]. After extensive wash to remove any non-specific binding, the immuno-precipitated products were analyzed with rabbit anti-DDDDK polyclonal antibody.
IP reaction : 2µg antibody / 500µl cell lysate



For full product information, images and publications, please visit our [website](https://www.genetex.com).