

## alpha 1 Antitrypsin antibody [9A1]

**Cat. No. GTX83666**

<b>Host</b>	Mouse
<b>Clonality</b>	Monoclonal
<b>Isotype</b>	IgG1
<b>Applications</b>	WB, IHC-P, IHC-Fr, FCM, IP
<b>Reactivity</b>	Human, Dog, Monkey, Ferret

References ( 1 )

Package

100 µl

## Applications

**Application Note**

\*Optimal dilutions/concentrations should be determined by the researcher.

Suggested dilution	Recommended dilution
WB	1:500-1:1000
IHC-P	1:150
IHC-Fr	Assay dependent
FCM	1:100
IP	2ug/500ul

Not tested in other applications.

**Calculated MW** 47 kDa. ( [Note](#) )**Product Note** KO/KD validation is based on published data (PMID: 35104244).

## Properties

<b>Form</b>	Liquid
<b>Buffer</b>	PBS, 1% BSA, 50% Glycerol
<b>Preservative</b>	0.02% Sodium azide
<b>Storage</b>	Store as concentrated solution. Centrifuge briefly prior to opening vial. For short-term storage (1-2 weeks), store at 4°C. For long-term storage, aliquot and store at -20°C or below. Avoid multiple freeze-thaw cycles.
<b>Concentration</b>	1 mg/ml (Please refer to the vial label for the specific concentration.)
<b>Immunogen</b>	Full-length protein expressed in 293T cell transfected with human SERPINA1 expression vector
<b>Purification</b>	Purified by affinity chromatography From tissue culture supernatant
<b>Conjugation</b>	Unconjugated



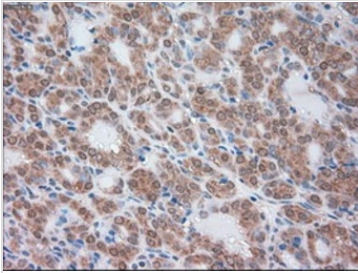
For full product information, images and publications, please visit our [website](#).

For laboratory research use only. Not for any clinical, therapeutic, or diagnostic use in humans or animals. Not for animal or human consumption.

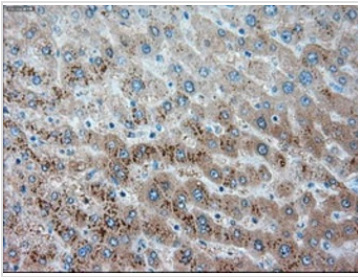
**Note**

Purchasers shall not, and agree not to enable third parties to, analyze, copy, reverse engineer or otherwise attempt to determine the structure or sequence of the product.

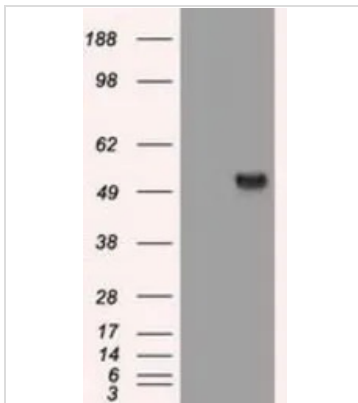
## DATA IMAGES

**GTX83666 IHC-P Image**

IHC-P analysis of human thyroid carcinoma tissue using GTX83666 alpha 1 Antitrypsin antibody [9A1].  
Antigen retrieval : Heat-induced epitope retrieval by 10mM citrate buffer, pH6.0, 100°C for 10min.

**GTX83666 IHC-P Image**

IHC-P analysis of human liver tissue using GTX83666 alpha 1 Antitrypsin antibody [9A1].  
Antigen retrieval : Heat-induced epitope retrieval by 10mM citrate buffer, pH6.0, 100°C for 10min.

**GTX83666 WB Image**

WB analysis of HEK293T cells transfected with alpha 1 Antitrypsin plasmid (Right) or empty vector (Left) for 48 hrs using GTX83666 alpha 1 Antitrypsin antibody [9A1].  
Loading : 5 ug per lane



For full product information, images and publications, please visit our [website](#).