

## SAMHD1 antibody [1F6]

Cat. No. GTX83687

<b>Host</b>	Mouse
<b>Clonality</b>	Monoclonal
<b>Isotype</b>	IgG1
<b>Applications</b>	WB, ICC/IF, FCM
<b>Reactivity</b>	Human, Mouse, Monkey

References ( 4 )

Package

100 µl

## Applications

## Application Note

\*Optimal dilutions/concentrations should be determined by the researcher.

Suggested dilution	Recommended dilution
WB	1:2000
ICC/IF	1:100
FCM	1:100

Not tested in other applications.

**Calculated MW** 72 kDa. ( [Note](#) )

## Properties

<b>Form</b>	Liquid
<b>Buffer</b>	PBS, 1% BSA, 50% Glycerol
<b>Preservative</b>	0.02% Sodium azide
<b>Storage</b>	Store as concentrated solution. Centrifuge briefly prior to opening vial. For short-term storage (1-2 weeks), store at 4°C. For long-term storage, aliquot and store at -20°C or below. Avoid multiple freeze-thaw cycles.
<b>Concentration</b>	1 mg/ml (Please refer to the vial label for the specific concentration.)
<b>Immunogen</b>	Full length human recombinant protein of human SAMHD1 (NP_056289) produced in HEK293T cell.
<b>Purification</b>	Purified by affinity chromatography From tissue culture supernatant
<b>Conjugation</b>	Unconjugated

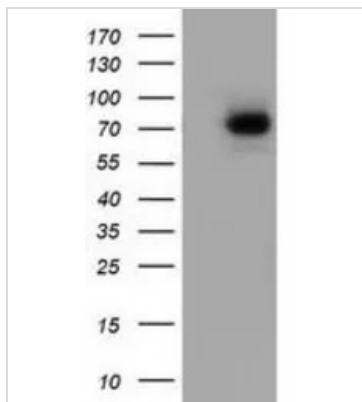
## Note

For laboratory research use only. Not for any clinical, therapeutic, or diagnostic use in humans or animals. Not for animal or human consumption.

Purchasers shall not, and agree not to enable third parties to, analyze, copy, reverse engineer or otherwise attempt to determine the structure or sequence of the product.

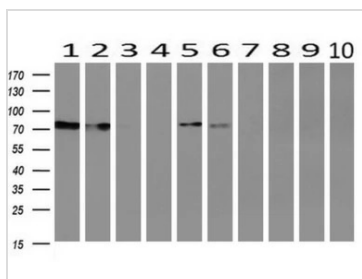


For full product information, images and publications, please visit our [website](#).

**DATA IMAGES**

**GTX83687 WB Image**

WB analysis of HEK293T cells transfected with SAMHD1 plasmid (Right) or empty vector (Left) for 48 hrs using GTX83687 SAMHD1 antibody [1F6].

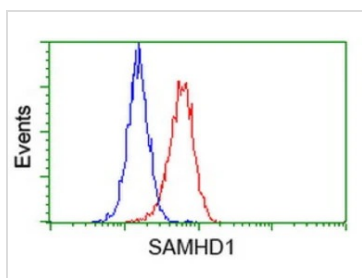
Loading : 5 ug per lane


**GTX83687 WB Image**

WB analysis of human tissues (Lane 1-Testis ; Lane 2-Omentum ; Lane 3-Uterus ; Lane 4-Breast ; Lane 5-Brain ; Lane 6-Liver ; Lane 7-Ovary ; Lane 8-Thyroid gland ; Lane 9-colon ; Lane 10-spleen) using GTX83687 SAMHD1 antibody [1F6].

Loading : 10 ug per lane

Dilution : 1:200


**GTX83687 FCM Image**

FACS analysis of HeLa cells using GTX83687 SAMHD1 antibody [1F6].

Red : Primary antibody

Blue : Negative control antibody


**GTX83687 ICC/IF Image**

ICC/IF analysis of COS7 cells transiently transfected with SAMHD1 plasmid using GTX83687 SAMHD1 antibody [1F6].



For full product information, images and publications, please visit our [website](https://www.genetex.com).