

RALBP1 antibody [6C6]

Cat. No. GTX83726

Host	Mouse
Clonality	Monoclonal
Isotype	IgG1
Applications	WB, ICC/IF, FCM, IP
Reactivity	Human, Monkey

Package
100 µl

Applications

Application Note

*Optimal dilutions/concentrations should be determined by the researcher.

Suggested dilution	Recommended dilution
WB	1:2000
ICC/IF	1:100
FCM	1:100
IP	2ug/500ul

Not tested in other applications.

Calculated MW 76 kDa. ([Note](#))

Properties

Form	Liquid
Buffer	PBS, 1% BSA, 50% Glycerol
Preservative	0.02% Sodium azide
Storage	Store as concentrated solution. Centrifuge briefly prior to opening vial. For short-term storage (1-2 weeks), store at 4°C. For long-term storage, aliquot and store at -20°C or below. Avoid multiple freeze-thaw cycles.
Concentration	0.68 mg/ml (Please refer to the vial label for the specific concentration.)
Immunogen	Full length human recombinant protein of human RALBP1 (NP_006779) produced in HEK293T cell.
Purification	Purified by affinity chromatography
Conjugation	Unconjugated

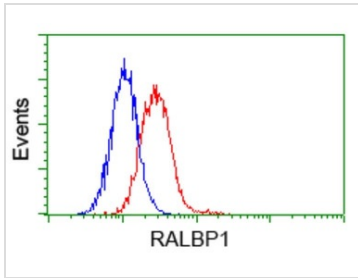
Note

For laboratory research use only. Not for any clinical, therapeutic, or diagnostic use in humans or animals. Not for animal or human consumption.

Purchasers shall not, and agree not to enable third parties to, analyze, copy, reverse engineer or otherwise attempt to determine the structure or sequence of the product.



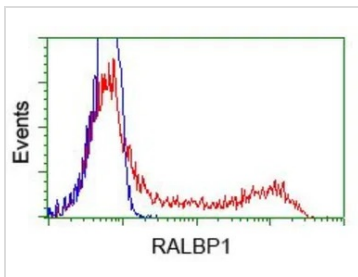
For full product information, images and publications, please visit our [website](#).

DATA IMAGES

GTX83726 FCM Image

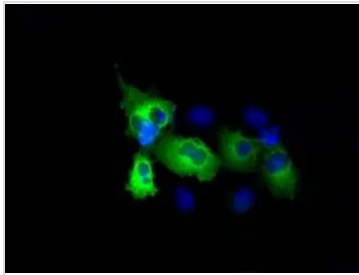
FACS analysis of HeLa cells using GTX83726 RALBP1 antibody [6C6].

Red : Primary antibody

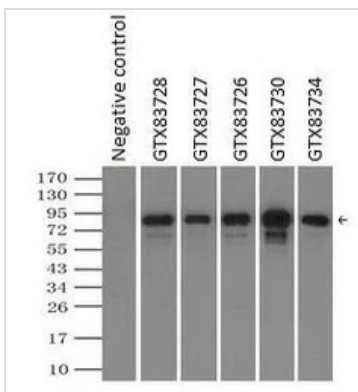
Blue : Negative control antibody


GTX83726 FCM Image

FACS analysis of HEK293T cells transfected with either RALBP1 plasmid(Red) or empty vector control plasmid(Blue) using GTX83726 RALBP1 antibody [6C6].


GTX83726 ICC/IF Image

ICC/IF analysis of COS7 cells transiently transfected with RALBP1 plasmid using GTX83726 RALBP1 antibody [6C6].


GTX83726 IP Image

IP analysis of DDDDK tagged RALBP1 overexpressed HEK293T lysate using GTX83726 RALBP1 antibody [6C6]. After extensive wash to remove any non-specific binding, the immuno-precipitated products were analyzed with rabbit anti-DDDDK polyclonal antibody.

IP reaction : 2µg antibody / 500µl cell lysate



For full product information, images and publications, please visit our [website](https://www.genetex.com).