

## RALBP1 antibody [1H9]

**Cat. No. GTX83727**

<b>Host</b>	Mouse
<b>Clonality</b>	Monoclonal
<b>Isotype</b>	IgG1
<b>Applications</b>	WB, FCM, IP
<b>Reactivity</b>	Human, Mouse, Rat, Dog, Monkey

**Package**  
100 µl

## Applications

**Application Note**

\*Optimal dilutions/concentrations should be determined by the researcher.

Suggested dilution	Recommended dilution
WB	1:2000
FCM	1:100
IP	2ug/500ul

Not tested in other applications.

**Calculated MW** 76 kDa. ([Note](#))

## Properties

<b>Form</b>	Liquid
<b>Buffer</b>	PBS, 1% BSA, 50% Glycerol
<b>Preservative</b>	0.02% Sodium azide
<b>Storage</b>	Store as concentrated solution. Centrifuge briefly prior to opening vial. For short-term storage (1-2 weeks), store at 4°C. For long-term storage, aliquot and store at -20°C or below. Avoid multiple freeze-thaw cycles.
<b>Concentration</b>	1 mg/ml (Please refer to the vial label for the specific concentration.)
<b>Immunogen</b>	Full length human recombinant protein of human RALBP1 (NP_006779) produced in HEK293T cell.
<b>Purification</b>	Purified by affinity chromatography
<b>Conjugation</b>	Unconjugated

**Note**

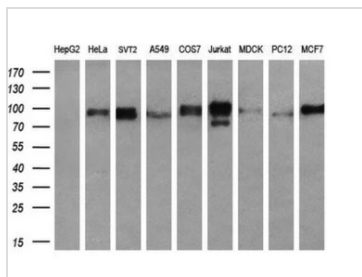
For laboratory research use only. Not for any clinical, therapeutic, or diagnostic use in humans or animals. Not for animal or human consumption.

Purchasers shall not, and agree not to enable third parties to, analyze, copy, reverse engineer or otherwise attempt to determine the structure or sequence of the product.



For full product information, images and publications, please visit our [website](#).

DATA IMAGES

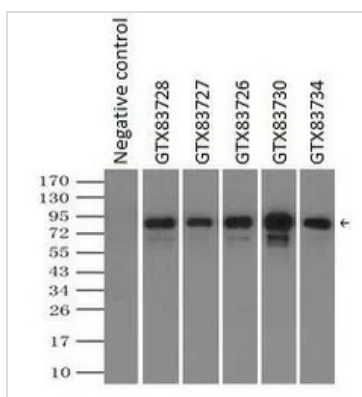


**GTX83727 WB Image**

WB analysis of various cell lines using GTX83727 RALBP1 antibody [1H9].

Loading : 35 ug per lane

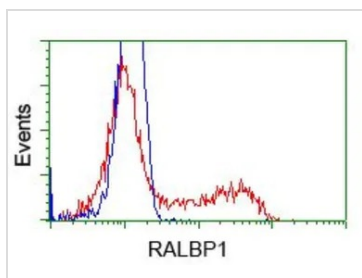
Dilution : 1:200



**GTX83727 IP Image**

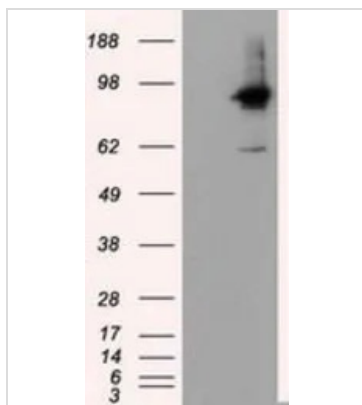
IP analysis of DDDD tagged RALBP1 overexpressed HEK293T lysate using GTX83727 RALBP1 antibody [1H9]. After extensive wash to remove any non-specific binding, the immuno-precipitated products were analyzed with rabbit anti-DDDDK polyclonal antibody.

IP reaction : 2µg antibody / 500µl cell lysate



**GTX83727 FCM Image**

FACS analysis of HEK293T cells transfected with either RALBP1 plasmid (Red) or empty vector control plasmid (Blue) using GTX83727 RALBP1 antibody [1H9].



**GTX83727 WB Image**

WB analysis of HEK293T cells transfected with RALBP1 plasmid (Right) or empty vector (Left) for 48 hrs using GTX83727 RALBP1 antibody [1H9].

Loading : 5 ug per lane



For full product information, images and publications, please visit our [website](http://www.genetex.com).