

RALBP1 antibody [2A6]

Cat. No. GTX83734

Host	Mouse
Clonality	Monoclonal
Isotype	IgG1
Applications	WB, ICC/IF, IHC-P, IP
Reactivity	Human

Package
100 µl

Applications

Application Note

*Optimal dilutions/concentrations should be determined by the researcher.

Suggested dilution	Recommended dilution
WB	1:1000
ICC/IF	1:100
IHC-P	1:50
IP	2ug/500ul

Not tested in other applications.

Calculated MW 76 kDa. ([Note](#))

Properties

Form	Liquid
Buffer	PBS, 1% BSA, 50% Glycerol
Preservative	0.02% Sodium azide
Storage	Store as concentrated solution. Centrifuge briefly prior to opening vial. For short-term storage (1-2 weeks), store at 4°C. For long-term storage, aliquot and store at -20°C or below. Avoid multiple freeze-thaw cycles.
Concentration	0.56 mg/ml (Please refer to the vial label for the specific concentration.)
Immunogen	Full length human recombinant protein of human RALBP1 (NP_006779) produced in HEK293T cell.
Purification	Purified by affinity chromatography
Conjugation	Unconjugated

Note

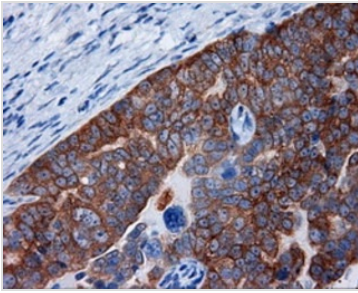
For laboratory research use only. Not for any clinical, therapeutic, or diagnostic use in humans or animals. Not for animal or human consumption.

Purchasers shall not, and agree not to enable third parties to, analyze, copy, reverse engineer or otherwise attempt to determine the structure or sequence of the product.



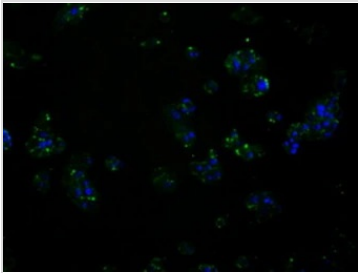
For full product information, images and publications, please visit our [website](#).

DATA IMAGES



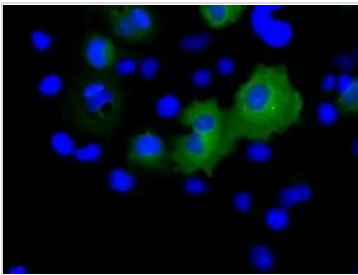
GTX83734 IHC-P Image

IHC-P analysis of human ovary adenocarcinoma tissue using GTX83734 RALBP1 antibody [2A6].
Antigen retrieval : Heat-induced epitope retrieval by 10mM citrate buffer, pH6.0, 100°C for 10min.
Dilution : 1:50



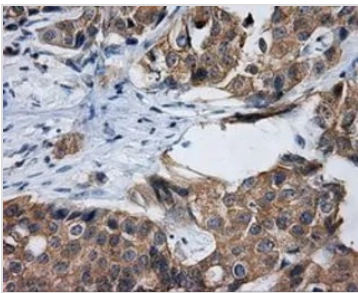
GTX83734 ICC/IF Image

ICC/IF analysis of HepG2 cells using GTX83734 RALBP1 antibody [2A6].



GTX83734 ICC/IF Image

ICC/IF analysis of COS7 cells transiently transfected with RALBP1 plasmid using GTX83734 RALBP1 antibody [2A6].



GTX83734 IHC-P Image

IHC-P analysis of breast adenocarcinoma tissue using GTX83734 RALBP1 antibody [2A6].
Antigen retrieval : Heat-induced epitope retrieval by 10mM citrate buffer, pH6.0, 100°C for 10min.
Dilution : 1:50



For full product information, images and publications, please visit our [website](https://www.genetex.com).