

## PYCRL antibody [2E10]

**Cat. No. GTX83750**

<b>Host</b>	Mouse
<b>Clonality</b>	Monoclonal
<b>Isotype</b>	IgG2b
<b>Applications</b>	WB, ICC/IF, FCM
<b>Reactivity</b>	Human, Monkey

**Package**  
100 µl

## Applications

**Application Note**

\*Optimal dilutions/concentrations should be determined by the researcher.

Suggested dilution	Recommended dilution
WB	1:2000
ICC/IF	1:100
FCM	1:100

Not tested in other applications.

**Calculated MW** 29 kDa. ([Note](#))

## Properties

<b>Form</b>	Liquid
<b>Buffer</b>	PBS, 1% BSA, 50% Glycerol
<b>Preservative</b>	0.02% Sodium azide
<b>Storage</b>	Store as concentrated solution. Centrifuge briefly prior to opening vial. For short-term storage (1-2 weeks), store at 4°C. For long-term storage, aliquot and store at -20°C or below. Avoid multiple freeze-thaw cycles.
<b>Concentration</b>	1 mg/ml (Please refer to the vial label for the specific concentration.)
<b>Immunogen</b>	Full length human recombinant protein of human PYCRL (NP_075566) produced in HEK293T cell.
<b>Purification</b>	Purified by affinity chromatography
<b>Conjugation</b>	Unconjugated

**Note**

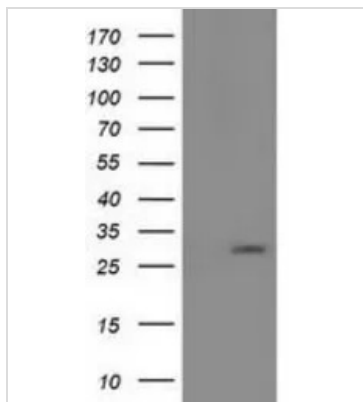
For laboratory research use only. Not for any clinical, therapeutic, or diagnostic use in humans or animals. Not for animal or human consumption.

Purchasers shall not, and agree not to enable third parties to, analyze, copy, reverse engineer or otherwise attempt to determine the structure or sequence of the product.



For full product information, images and publications, please visit our [website](#).

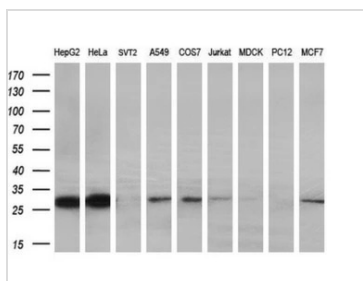
DATA IMAGES



**GTX83750 WB Image**

WB analysis of HEK293T cells transfected with PYCRL plasmid (Right) or empty vector (Left) for 48 hrs using GTX83750 PYCRL antibody [2E10].

Loading : 5 ug per lane

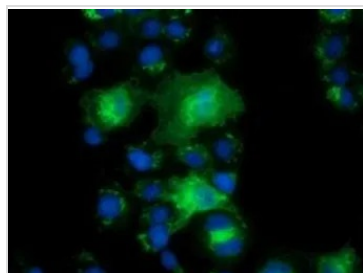


**GTX83750 WB Image**

WB analysis of various cell lines using GTX83750 PYCRL antibody [2E10].

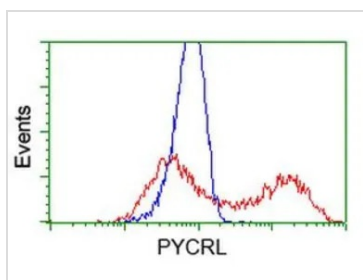
Loading : 35 ug per lane

Dilution : 1:200



**GTX83750 ICC/IF Image**

ICC/IF analysis of COS7 cells transiently transfected with PYCRL plasmid using GTX83750 PYCRL antibody [2E10].



**GTX83750 FCM Image**

FACS analysis of HEK293T cells transfected with either PYCRL plasmid(Red) or empty vector control plasmid(Blue) using GTX83750 PYCRL antibody [2E10].



For full product information, images and publications, please visit our [website](#).