

PUS7 antibody [4H5]

Cat. No. GTX83756

Host	Mouse
Clonality	Monoclonal
Isotype	IgG1
Applications	WB, FCM
Reactivity	Human, Dog, Monkey

Package
100 µl

Applications

Application Note

*Optimal dilutions/concentrations should be determined by the researcher.

Suggested dilution	Recommended dilution
WB	1:2000
FCM	1:100

Not tested in other applications.

Calculated MW 75 kDa. ([Note](#))

Properties

Form	Liquid
Buffer	PBS, 1% BSA, 50% Glycerol
Preservative	0.02% Sodium azide
Storage	Store as concentrated solution. Centrifuge briefly prior to opening vial. For short-term storage (1-2 weeks), store at 4°C. For long-term storage, aliquot and store at -20°C or below. Avoid multiple freeze-thaw cycles.
Concentration	0.54 mg/ml (Please refer to the vial label for the specific concentration.)
Immunogen	Full length human recombinant protein of human PUS7 (NP_061915) produced in HEK293T cell.
Purification	Purified by affinity chromatography
Conjugation	Unconjugated

Note

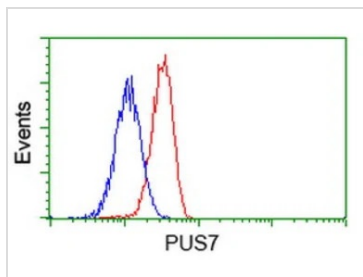
For laboratory research use only. Not for any clinical, therapeutic, or diagnostic use in humans or animals. Not for animal or human consumption.

Purchasers shall not, and agree not to enable third parties to, analyze, copy, reverse engineer or otherwise attempt to determine the structure or sequence of the product.



For full product information, images and publications, please visit our [website](#).

DATA IMAGES

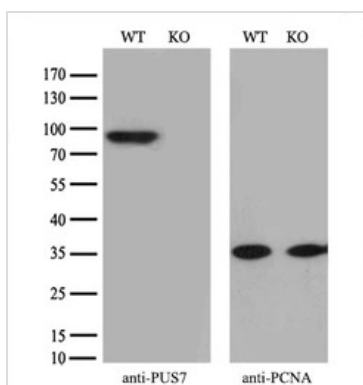


GTX83756 FCM Image

FACS analysis of Jurkat cells using GTX83756 PUS7 antibody [4H5].

Red : Primary antibody

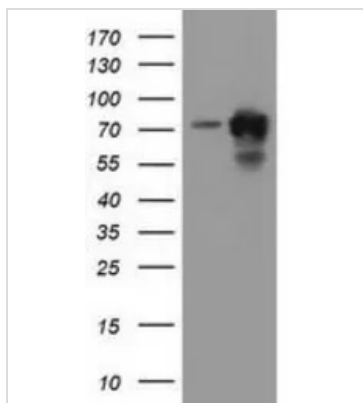
Blue : Negative control antibody



GTX83756 WB Image

WB analysis of wild type and PUS7 knock out HeLa cell lysate(10µg per lane) using GTX83756 PUS7 antibody [4H5].

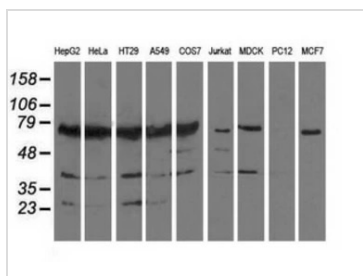
Dilution : 1:1000



GTX83756 WB Image

WB analysis of HEK293T cells transfected with PUS7 plasmid (Right) or empty vector (Left) for 48 hrs using GTX83756 PUS7 antibody [4H5].

Loading : 5 ug per lane



GTX83756 WB Image

WB analysis of various cell lines using GTX83756 PUS7 antibody [4H5].

Loading : 35 ug per lane



For full product information, images and publications, please visit our [website](#).