

## PUS7 antibody [4H5]

Cat. No. GTX83756

|              |                    |
|--------------|--------------------|
| Host         | Mouse              |
| Clonality    | Monoclonal         |
| Isotype      | IgG1               |
| Applications | WB, FCM            |
| Reactivity   | Human, Dog, Monkey |

Package  
100 µl

## Applications

## Application Note

\*Optimal dilutions/concentrations should be determined by the researcher.

| Suggested dilution | Recommended dilution |
|--------------------|----------------------|
| WB                 | 1:2000               |
| FCM                | 1:100                |

Not tested in other applications.

Calculated MW 75 kDa. ( [Note](#) )

## Properties

|               |  |
|---------------|--|
| Form          | Liquid   |
| Buffer        | PBS, 1% BSA, 50% Glycerol  |
| Preservative  | 0.02% Sodium azide   |
| Storage       | Store as concentrated solution. Centrifuge briefly prior to opening vial. For short-term storage (1-2 weeks), store at 4°C. For long-term storage, aliquot and store at -20°C or below. Avoid multiple freeze-thaw cycles. |
| Concentration | 0.54 mg/ml (Please refer to the vial label for the specific concentration.)  |
| Immunogen     | Full length human recombinant protein of human PUS7 (NP_061915) produced in HEK293T cell.  |
| Purification  | Purified by affinity chromatography  |
| Conjugation   | Unconjugated   |

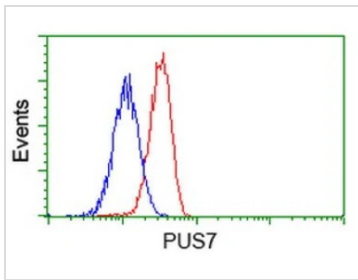
## Note

For laboratory research use only. Not for any clinical, therapeutic, or diagnostic use in humans or animals. Not for animal or human consumption.

Purchasers shall not, and agree not to enable third parties to, analyze, copy, reverse engineer or otherwise attempt to determine the structure or sequence of the product.



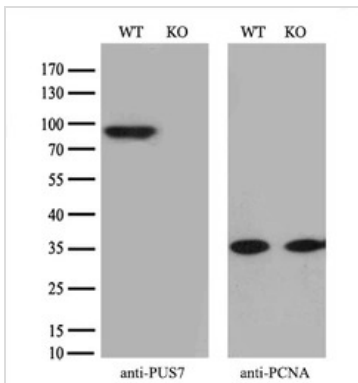
For full product information, images and publications, please visit our [website](#).

**DATA IMAGES**

**GTX83756 FCM Image**

FACS analysis of Jurkat cells using GTX83756 PUS7 antibody [4H5].

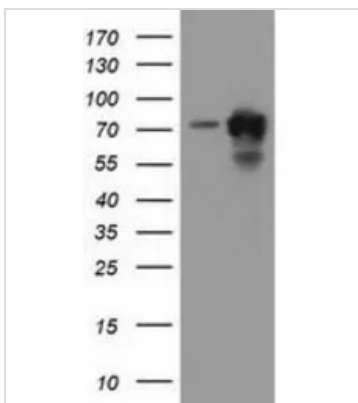
Red : Primary antibody

Blue : Negative control antibody


**GTX83756 WB Image**

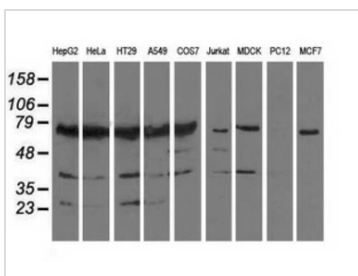
WB analysis of wild type and PUS7 knock out HeLa cell lysate(10µg per lane) using GTX83756 PUS7 antibody [4H5].

Dilution : 1:1000


**GTX83756 WB Image**

WB analysis of HEK293T cells transfected with PUS7 plasmid (Right) or empty vector (Left) for 48 hrs using GTX83756 PUS7 antibody [4H5].

Loading : 5 ug per lane


**GTX83756 WB Image**

WB analysis of various cell lines using GTX83756 PUS7 antibody [4H5].

Loading : 35 ug per lane



For full product information, images and publications, please visit our [website](https://www.genetex.com).