

## PTPRE antibody [2A9]

**Cat. No. GTX83761**

<b>Host</b>	Mouse
<b>Clonality</b>	Monoclonal
<b>Isotype</b>	IgG2b
<b>Applications</b>	WB, ICC/IF, IHC-P, FCM
<b>Reactivity</b>	Human

**Package**  
100 µl

## Applications

**Application Note**

\*Optimal dilutions/concentrations should be determined by the researcher.

Suggested dilution	Recommended dilution
WB	Assay dependent
ICC/IF	1:100
IHC-P	1:150
FCM	1:100

Not tested in other applications.

**Calculated MW** 81 kDa. ([Note](#))

## Properties

<b>Form</b>	Liquid
<b>Buffer</b>	PBS, 1% BSA, 50% Glycerol
<b>Preservative</b>	0.02% Sodium azide
<b>Storage</b>	Store as concentrated solution. Centrifuge briefly prior to opening vial. For short-term storage (1-2 weeks), store at 4°C. For long-term storage, aliquot and store at -20°C or below. Avoid multiple freeze-thaw cycles.
<b>Concentration</b>	0.79 mg/ml (Please refer to the vial label for the specific concentration.)
<b>Immunogen</b>	Full length human recombinant protein of human PTPRE (NP_006495) produced in HEK293T cell.
<b>Purification</b>	Purified by affinity chromatography
<b>Conjugation</b>	Unconjugated

**Note**

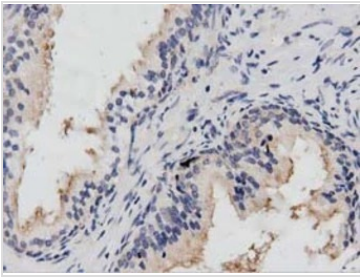
For laboratory research use only. Not for any clinical, therapeutic, or diagnostic use in humans or animals. Not for animal or human consumption.

Purchasers shall not, and agree not to enable third parties to, analyze, copy, reverse engineer or otherwise attempt to determine the structure or sequence of the product.



For full product information, images and publications, please visit our [website](#).

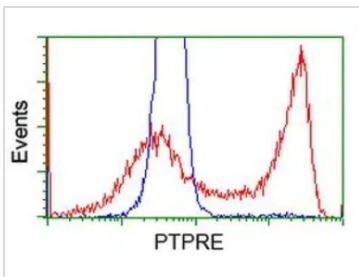
## DATA IMAGES

**GTX83761 IHC-P Image**

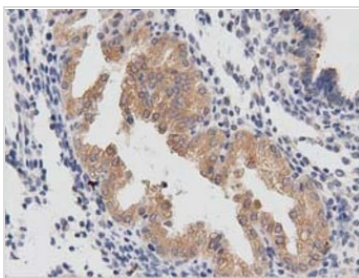
IHC-P analysis of human prostate tissue using GTX83761 PTPRE antibody [2A9].

Antigen retrieval : Heat-induced epitope retrieval by 10mM citrate buffer, pH6.0, 100°C for 10min.

Dilution : 1:50

**GTX83761 FCM Image**

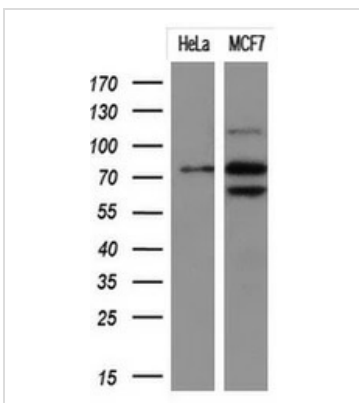
FACS analysis of HEK293T cells transfected with either PTPRE plasmid(Red) or empty vector control plasmid(Blue) using GTX83761 PTPRE antibody [2A9].

**GTX83761 IHC-P Image**

IHC-P analysis of human prostate carcinoma tissue using GTX83761 PTPRE antibody [2A9].

Antigen retrieval : Heat-induced epitope retrieval by 10mM citrate buffer, pH6.0, 100°C for 10min.

Dilution : 1:50

**GTX83761 WB Image**

WB analysis of HeLa and MCF-7 cell lysate using GTX83761 PTPRE antibody [2A9].

Loading : 10 ug per lane

Dilution : 1:200



For full product information, images and publications, please visit our [website](#).