

PTPRE antibody [4B2]

Cat. No. GTX83763

Host	Mouse
Clonality	Monoclonal
Isotype	IgG2a
Application	WB, ICC/IF, IHC-P, FACS
Reactivity	Human, Monkey

Package
100 µl

APPLICATION

Application Note

*Optimal dilutions/concentrations should be determined by the researcher.

Suggested dilution	Recommended dilution
WB	1:2000
ICC/IF	1:100
IHC-P	1:50
FACS	1:50

Not tested in other applications.

Calculated MW 81 kDa. ([Note](#))

PROPERTIES

Form	Liquid
Buffer	PBS, 1% BSA, 50% Glycerol
Preservative	0.02% Sodium azide
Storage	Store as concentrated solution. Centrifuge briefly prior to opening vial. For short-term storage (1-2 weeks), store at 4°C. For long-term storage, aliquot and store at -20°C or below. Avoid multiple freeze-thaw cycles.
Concentration	0.89 mg/ml (Please refer to the vial label for the specific concentration.)
Immunogen	Full length human recombinant protein of human PTPRE (NP_006495) produced in HEK293T cell.
Purification	Purified by affinity chromatography
Conjugation	Unconjugated

Note

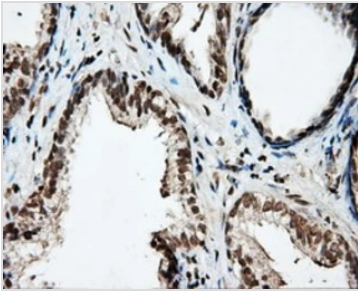
For laboratory research use only. Not for any clinical, therapeutic, or diagnostic use in humans or animals. Not for animal or human consumption.

Purchasers shall not, and agree not to enable third parties to, analyze, copy, reverse engineer or otherwise attempt to determine the structure or sequence of the product.



For full product information, images and publications, please visit our [website](#).

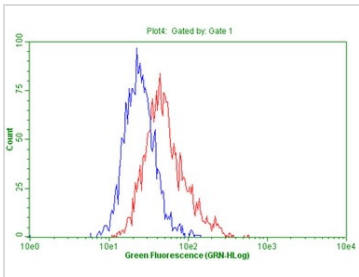
DATA IMAGES



GTX83763 IHC-P Image

IHC-P analysis of human prostate carcinoma tissue using GTX83763 PTPRE antibody [4B2].

Antigen retrieval : Heat-induced epitope retrieval by 1mM EDTA in 10mM Tris buffer (pH8.5) at 120°C for 3 min.

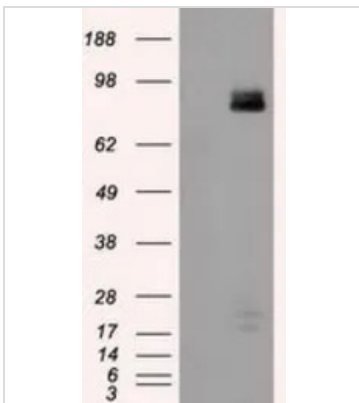


GTX83763 FACS Image

FACS analysis of Malme-3M cells using GTX83763 PTPRE antibody [4B2].

Red : Primary antibody

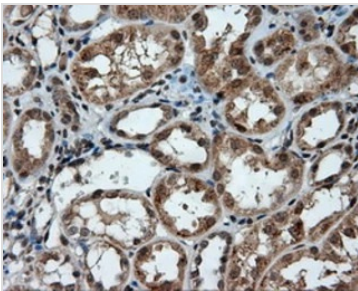
Blue : no antibody control



GTX83763 WB Image

WB analysis of HEK293T cells transfected with PTPRE plasmid (Right) or empty vector (Left) for 48 hrs using GTX83763 PTPRE antibody [4B2].

Loading : 5 ug per lane



GTX83763 IHC-P Image

IHC-P analysis of human kidney tissue using GTX83763 PTPRE antibody [4B2].

Antigen retrieval : Heat-induced epitope retrieval by 1mM EDTA in 10mM Tris buffer (pH8.5) at 120°C for 3 min.



For full product information, images and publications, please visit our [website](https://www.genetex.com).