

## PSMC3 antibody [1C10]

Cat. No. GTX83784

Host	Mouse
Clonality	Monoclonal
Isotype	IgG2a
Applications	WB, ICC/IF, IHC-P
Reactivity	Human, Rat, Dog, Monkey

Package  
100 µl

## Applications

## Application Note

\*Optimal dilutions/concentrations should be determined by the researcher.

Suggested dilution	Recommended dilution
WB	1:2000
ICC/IF	1:100
IHC-P	1:50

Not tested in other applications.

Calculated MW 49 kDa. ( [Note](#) )

## Properties

Form	Liquid
Buffer	PBS, 1% BSA, 50% Glycerol
Preservative	0.02% Sodium azide
Storage	Store as concentrated solution. Centrifuge briefly prior to opening vial. For short-term storage (1-2 weeks), store at 4°C. For long-term storage, aliquot and store at -20°C or below. Avoid multiple freeze-thaw cycles.
Concentration	0.81 mg/ml (Please refer to the vial label for the specific concentration.)
Immunogen	Full length human recombinant protein of human PSMC3(NP_002795) produced in HEK293T cell.
Purification	Purified by affinity chromatography
Conjugation	Unconjugated

## Note

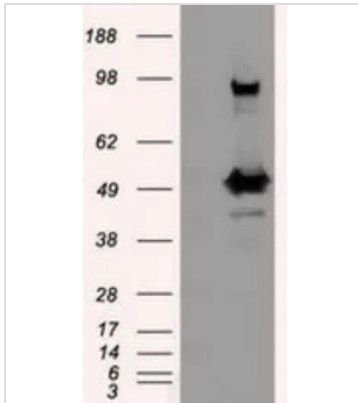
For laboratory research use only. Not for any clinical, therapeutic, or diagnostic use in humans or animals. Not for animal or human consumption.

Purchasers shall not, and agree not to enable third parties to, analyze, copy, reverse engineer or otherwise attempt to determine the structure or sequence of the product.



For full product information, images and publications, please visit our [website](#).

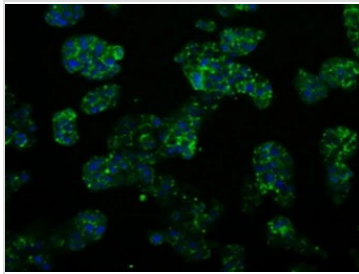
## DATA IMAGES



### GTx83784 WB Image

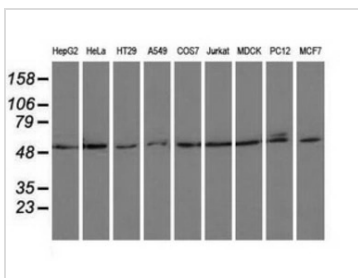
WB analysis of HEK293T cells transfected with PSMC3 plasmid (Right) or empty vector (Left) for 48 hrs using GTx83784 PSMC3 antibody [1C10].

Loading : 5 ug per lane



### GTx83784 ICC/IF Image

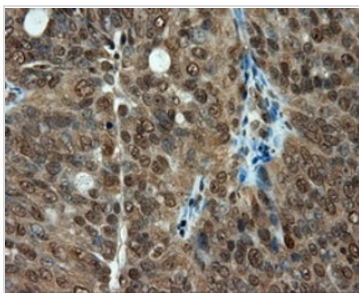
ICC/IF analysis of HepG2 cells using GTx83784 PSMC3 antibody [1C10].



### GTx83784 WB Image

WB analysis of various cell lines using GTx83784 PSMC3 antibody [1C10].

Loading : 35 ug per lane



### GTx83784 IHC-P Image

IHC-P analysis of human ovary adenocarcinoma tissue using GTx83784 PSMC3 antibody [1C10].

Antigen retrieval : Heat-induced epitope retrieval by 10mM citrate buffer, pH6.0, 100°C for 10min.

Dilution : 1:50



For full product information, images and publications, please visit our [website](https://www.genetex.com).