

## PROM2 antibody [14D1]

Cat. No. GTX83792

Host	Mouse
Clonality	Monoclonal
Isotype	IgG1
Applications	WB, ICC/IF, IHC-P
Reactivity	Human, Mouse, Monkey

References ( 1 )

Package

100 µl

## Applications

## Application Note

\*Optimal dilutions/concentrations should be determined by the researcher.

Suggested dilution	Recommended dilution
WB	1:2500-1:5000
ICC/IF	1:100
IHC-P	1:50

Not tested in other applications.

Calculated MW 92 kDa. ( [Note](#) )

## Properties

Form	Liquid
Buffer	PBS, 1% BSA, 50% Glycerol
Preservative	0.02% Sodium azide
Storage	Store as concentrated solution. Centrifuge briefly prior to opening vial. For short-term storage (1-2 weeks), store at 4°C. For long-term storage, aliquot and store at -20°C or below. Avoid multiple freeze-thaw cycles.
Concentration	0.8 mg/ml (Please refer to the vial label for the specific concentration.)
Immunogen	Full-length protein expressed in 293T cell transfected with human PROM2 expression vector
Purification	Purified by affinity chromatography
Conjugation	Unconjugated

## Note

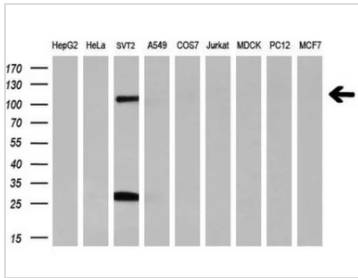
For laboratory research use only. Not for any clinical, therapeutic, or diagnostic use in humans or animals. Not for animal or human consumption.

Purchasers shall not, and agree not to enable third parties to, analyze, copy, reverse engineer or otherwise attempt to determine the structure or sequence of the product.



For full product information, images and publications, please visit our [website](#).

## DATA IMAGES

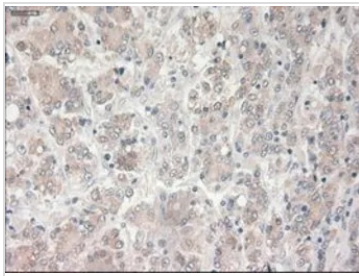


### GTX83792 WB Image

WB analysis of various cell lines using GTX83792 PROM2 antibody [14D1].

Loading : 35 ug per lane

Dilution : 1:200

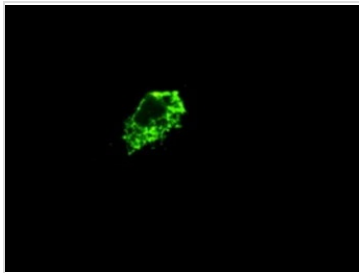


### GTX83792 IHC-P Image

IHC-P analysis of liver carcinoma tissue using GTX83792 PROM2 antibody [14D1].

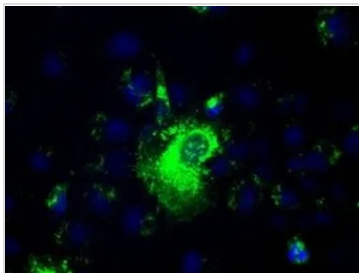
Antigen retrieval : Heat-induced epitope retrieval by 10mM citrate buffer, pH6.0, 100°C for 10min.

Dilution : 1:50



### GTX83792 ICC/IF Image

ICC/IF analysis of COS7 cells using GTX83792 PROM2 antibody [14D1].



### GTX83792 ICC/IF Image

ICC/IF analysis of COS7 cells transiently transfected with PROM2 plasmid using GTX83792 PROM2 antibody [14D1].



For full product information, images and publications, please visit our [website](#).