

PROM2 antibody [5E5]

Cat. No. GTX83797

Host	Mouse
Clonality	Monoclonal
Isotype	IgG2b
Applications	WB, ICC/IF, IP
Reactivity	Human, Monkey

Package
100 µl

Applications

Application Note

*Optimal dilutions/concentrations should be determined by the researcher.

Suggested dilution	Recommended dilution
WB	1:1000-1:2000
ICC/IF	Assay dependent
IP	2ug/500ul

Not tested in other applications.

Calculated MW 92 kDa. ([Note](#))

Properties

Form	Liquid
Buffer	PBS, 1% BSA, 50% Glycerol
Preservative	0.02% Sodium azide
Storage	Store as concentrated solution. Centrifuge briefly prior to opening vial. For short-term storage (1-2 weeks), store at 4°C. For long-term storage, aliquot and store at -20°C or below. Avoid multiple freeze-thaw cycles.
Concentration	1 mg/ml (Please refer to the vial label for the specific concentration.)
Immunogen	Full-length protein expressed in 293T cell transfected with human PROM2 expression vector
Purification	Purified by affinity chromatography From tissue culture supernatant
Conjugation	Unconjugated

Note

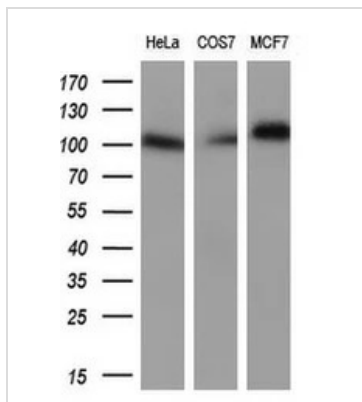
For laboratory research use only. Not for any clinical, therapeutic, or diagnostic use in humans or animals. Not for animal or human consumption.

Purchasers shall not, and agree not to enable third parties to, analyze, copy, reverse engineer or otherwise attempt to determine the structure or sequence of the product.



For full product information, images and publications, please visit our [website](#).

DATA IMAGES

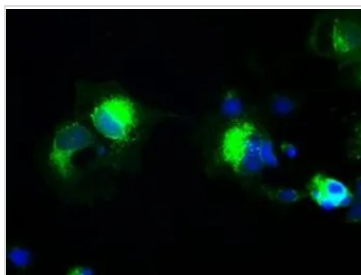


GTX83797 WB Image

WB analysis of various cell lines using GTX83797 PROM2 antibody [5E5].

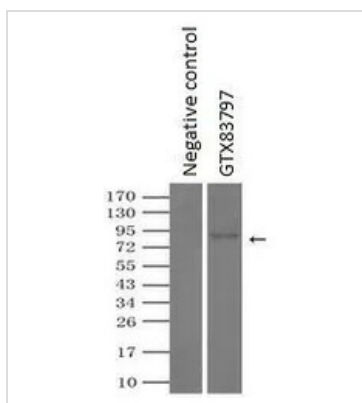
Loading : 10 ug per lane

Dilution : 1:200



GTX83797 ICC/IF Image

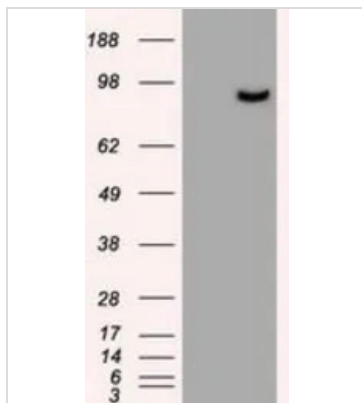
ICC/IF analysis of COS7 cells transiently transfected with PROM2 plasmid using GTX83797 PROM2 antibody [5E5].



GTX83797 IP Image

IP analysis of DDDDK tagged PROM2 overexpressed HEK293T lysate using GTX83797 PROM2 antibody [5E5]. After extensive wash to remove any non-specific binding, the immuno-precipitated products were analyzed with rabbit anti-DDDDK polyclonal antibody.

IP reaction : 2μg antibody / 500μl cell lysate



GTX83797 WB Image

WB analysis of HEK293T cells transfected with PROM2 plasmid (Right) or empty vector (Left) for 48 hrs using GTX83797 PROM2 antibody [5E5].

Loading : 5 ug per lane



For full product information, images and publications, please visit our [website](https://www.genetex.com).