

## PPP5C antibody [2E12]

**Cat. No. GTX83832**

<b>Host</b>	Mouse
<b>Clonality</b>	Monoclonal
<b>Isotype</b>	IgG1
<b>Applications</b>	WB, ICC/IF, IHC-P, FCM
<b>Reactivity</b>	Human, Rat, Dog, Monkey

**Package**  
100 µl

## Applications

**Application Note**

\*Optimal dilutions/concentrations should be determined by the researcher.

Suggested dilution	Recommended dilution
WB	1:2000
ICC/IF	1:100
IHC-P	1:50
FCM	1:100

Not tested in other applications.

**Calculated MW** 57 kDa. ([Note](#))

## Properties

<b>Form</b>	Liquid
<b>Buffer</b>	PBS, 1% BSA, 50% Glycerol
<b>Preservative</b>	0.02% Sodium azide
<b>Storage</b>	Store as concentrated solution. Centrifuge briefly prior to opening vial. For short-term storage (1-2 weeks), store at 4°C. For long-term storage, aliquot and store at -20°C or below. Avoid multiple freeze-thaw cycles.
<b>Concentration</b>	1 mg/ml (Please refer to the vial label for the specific concentration.)
<b>Immunogen</b>	Full length human recombinant protein of human PPP5C (NP_006238) produced in HEK293T cell.
<b>Purification</b>	Purified by affinity chromatography
<b>Conjugation</b>	Unconjugated

**Note**

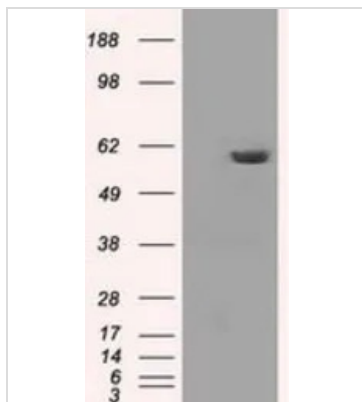
For laboratory research use only. Not for any clinical, therapeutic, or diagnostic use in humans or animals. Not for animal or human consumption.

Purchasers shall not, and agree not to enable third parties to, analyze, copy, reverse engineer or otherwise attempt to determine the structure or sequence of the product.



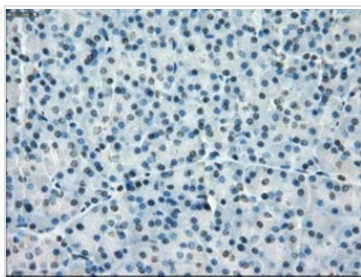
For full product information, images and publications, please visit our [website](#).

## DATA IMAGES

**GTX83832 WB Image**

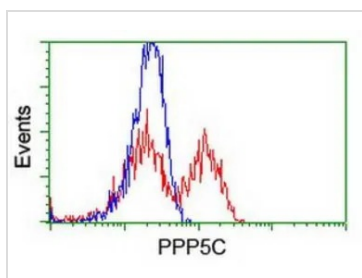
WB analysis of HEK293T cells transfected with PPP5C plasmid (Right) or empty vector (Left) for 48 hrs using GTX83832 PPP5C antibody [2E12].

Loading : 5 ug per lane

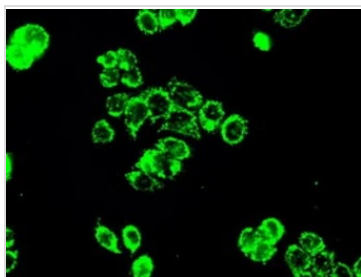
**GTX83832 IHC-P Image**

IHC-P analysis of human pancreas tissue using GTX83832 PPP5C antibody [2E12].

Antigen retrieval : Heat-induced epitope retrieval by 10mM citrate buffer, pH6.0, 100°C for 10min.

**GTX83832 FCM Image**

FACS analysis of HEK293T cells transfected with either PPP5C plasmid (Red) or empty vector control plasmid (Blue) using GTX83832 PPP5C antibody [2E12].

**GTX83832 ICC/IF Image**

ICC/IF analysis of HT29 cells using GTX83832 PPP5C antibody [2E12].



For full product information, images and publications, please visit our [website](#).