

PPP5C antibody [3G1]

Cat. No. GTX83836

Host	Mouse
Clonality	Monoclonal
Isotype	IgG2b
Applications	WB, ICC/IF, IHC-P, FCM
Reactivity	Human, Mouse, Monkey

Package
100 µl

Applications

Application Note

*Optimal dilutions/concentrations should be determined by the researcher.

Suggested dilution	Recommended dilution
WB	1:1000
ICC/IF	1:50-1:100
IHC-P	1:50
FCM	1:100

Not tested in other applications.

Calculated MW 57 kDa. ([Note](#))

Properties

Form	Liquid
Buffer	PBS, 1% BSA, 50% Glycerol
Preservative	0.02% Sodium azide
Storage	Store as concentrated solution. Centrifuge briefly prior to opening vial. For short-term storage (1-2 weeks), store at 4°C. For long-term storage, aliquot and store at -20°C or below. Avoid multiple freeze-thaw cycles.
Concentration	1 mg/ml (Please refer to the vial label for the specific concentration.)
Immunogen	Full length human recombinant protein of human PPP5C (NP_006238) produced in HEK293T cell.
Purification	Purified by affinity chromatography
Conjugation	Unconjugated

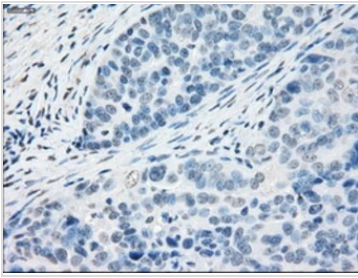
Note

For laboratory research use only. Not for any clinical, therapeutic, or diagnostic use in humans or animals. Not for animal or human consumption.

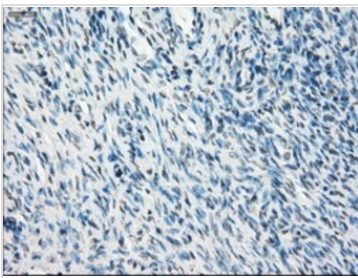
Purchasers shall not, and agree not to enable third parties to, analyze, copy, reverse engineer or otherwise attempt to determine the structure or sequence of the product.



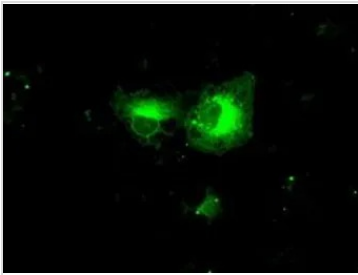
For full product information, images and publications, please visit our [website](#).

DATA IMAGES

GTX83836 IHC-P Image

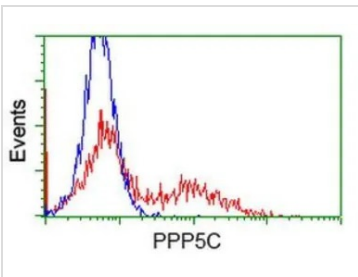
IHC-P analysis of human ovary adenocarcinoma tissue using GTX83836 PPP5C antibody [3G1].
Antigen retrieval : Heat-induced epitope retrieval by 10mM citrate buffer, pH6.0, 100°C for 10min.


GTX83836 IHC-P Image

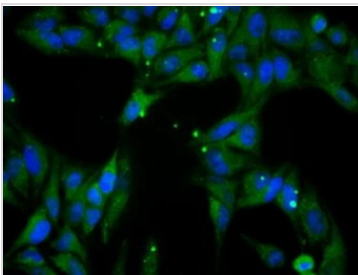
IHC-P analysis of human ovary tissue using GTX83836 PPP5C antibody [3G1].
Antigen retrieval : Heat-induced epitope retrieval by 10mM citrate buffer, pH6.0, 100°C for 10min.


GTX83836 ICC/IF Image

ICC/IF analysis of COS7 cells transiently transfected with PPP5C plasmid using GTX83836 PPP5C antibody [3G1].


GTX83836 FCM Image

FACS analysis of HEK293T cells transfected with either PPP5C plasmid(Red) or empty vector control plasmid(Blue) using GTX83836 PPP5C antibody [3G1].


GTX83836 ICC/IF Image

ICC/IF analysis of HeLa cells using GTX83836 PPP5C antibody [3G1].



For full product information, images and publications, please visit our [website](https://www.genetex.com).