

PPME1 antibody [7F12]

Cat. No. GTX83847

Host	Mouse
Clonality	Monoclonal
Isotype	IgG1
Applications	WB, ICC/IF, IHC-P, FCM
Reactivity	Human, Mouse, Rat, Dog, Monkey

Package
100 µl

Applications

Application Note

*Optimal dilutions/concentrations should be determined by the researcher.

Suggested dilution	Recommended dilution
WB	1:2000
ICC/IF	1:100
IHC-P	1:50
FCM	1:100

Not tested in other applications.

Calculated MW 42 kDa. ([Note](#))

Properties

Form	Liquid
Buffer	PBS, 1% BSA, 50% Glycerol
Preservative	0.02% Sodium azide
Storage	Store as concentrated solution. Centrifuge briefly prior to opening vial. For short-term storage (1-2 weeks), store at 4°C. For long-term storage, aliquot and store at -20°C or below. Avoid multiple freeze-thaw cycles.
Concentration	0.96 mg/ml (Please refer to the vial label for the specific concentration.)
Immunogen	Full length human recombinant protein of human PPME1 (NP_057231) produced in HEK293T cell.
Purification	Purified by affinity chromatography
Conjugation	Unconjugated

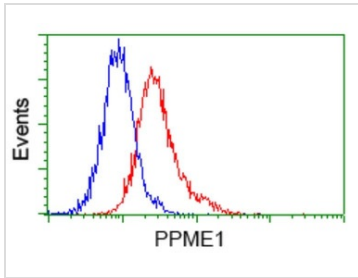
Note

For laboratory research use only. Not for any clinical, therapeutic, or diagnostic use in humans or animals. Not for animal or human consumption.

Purchasers shall not, and agree not to enable third parties to, analyze, copy, reverse engineer or otherwise attempt to determine the structure or sequence of the product.



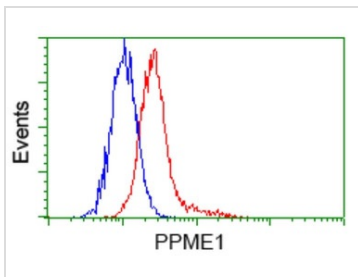
For full product information, images and publications, please visit our [website](#).

DATA IMAGES

GTX83847 FCM Image

FACS analysis of Jurkat cells using GTX83847 PPME1 antibody [7F12].

Red : Primary antibody

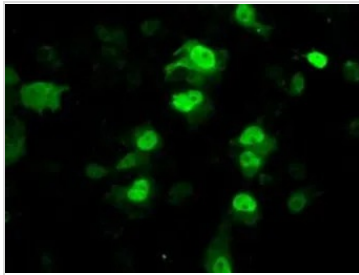
Blue : Negative control antibody


GTX83847 FCM Image

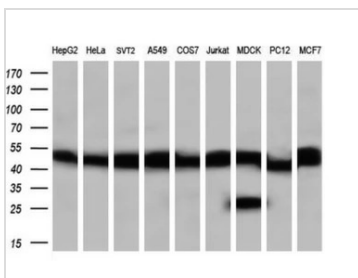
FACS analysis of HeLa cells using GTX83847 PPME1 antibody [7F12].

Red : Primary antibody

Blue : Negative control antibody


GTX83847 ICC/IF Image

ICC/IF analysis of COS7 cells transiently transfected with PPME1 plasmid using GTX83847 PPME1 antibody [7F12].


GTX83847 WB Image

WB analysis of various cell lines using GTX83847 PPME1 antibody [7F12].

Loading : 35 ug per lane

Dilution : 1:200



For full product information, images and publications, please visit our [website](https://www.genetex.com).